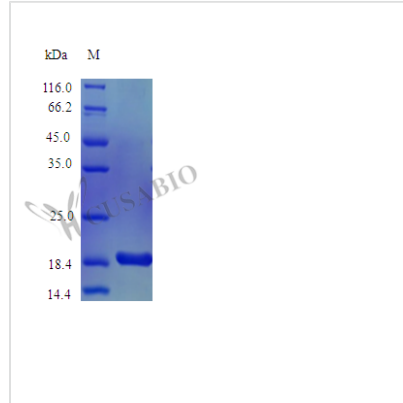




Recombinant Mouse Kitlg ligand protein (Kitlg), partial (Active)

Product Code	CSB-AP003151MO
Abbreviation	Recombinant Mouse Kitlg protein, partial (Active)
Uniprot No.	P20826
Form	Lyophilized powder
Storage Buffer	Lyophilized from a 0.2 µm filtered PBS, pH 7.4
Product Type	Colony Stimulating Factor
Immunogen Species	Mus musculus (Mouse)
Biological Activity	Fully biologically active when compared to standard. The ED50 as determined by a cell proliferation assay using human TF-1 cells is less than 10 ng/ml, corresponding to a specific activity of >1.0x10 ⁵ IU/mg.
Purity	≥97% as determined by SDS-PAGE.
Sequence	M+KEICGNPVT DNVKDITKLV ANLPNDYMIT LNYVAGMDVL PSHCWLRDMV IQLSLSLTTL LDKFSNISEG LSNYSIIDKL GKIVDDL VLC MEENAPKNIK ESPKRPETRS FTPEEFSIF NRSIDAFKDF MVASDTSDCV LSSTLGPEKD SRVSVTKPFM LPPVA
Research Area	Immunology
Source	E.coli
Target Names	Kitlg
Expression Region	26-189aa
Notes	Repeated freezing and thawing is not recommended. Store working aliquots at 4°C for up to one week.
Tag Info	Tag-Free
Mol. Weight	18.4 kDa
Protein Length	Partial
PubMed ID	1698558; 1378327; 1705866; 1383087; 8849898; 8875893; 9360640; 16141072; 15489334; 1698557; 1698556; 1698554; 1698553; 17255936

Image


Endotoxin

Less than 1.0 EU/μg as determined by LAL method.

Reconstitution

We recommend that this vial be briefly centrifuged prior to opening to bring the contents to the bottom. Please reconstitute protein in deionized sterile water to a concentration of 0.1-1.0 mg/mL. We recommend to add 5-50% of glycerol (final concentration) and aliquot for long-term storage at -20°C/-80°C. Our default final concentration of glycerol is 50%. Customers could use it as reference.

Shelf Life

The shelf life is related to many factors, storage state, buffer ingredients, storage temperature and the stability of the protein itself. Generally, the shelf life of liquid form is 6 months at -20°C/-80°C. The shelf life of lyophilized form is 12 months at -20°C/-80°C.