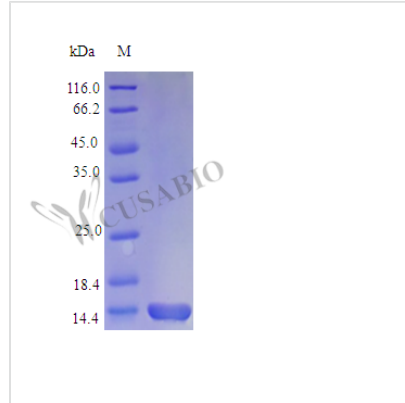




Recombinant Rhesus Macaque Granulocyte-macrophage colony-stimulating factor protein (GM-CSF) (Active)

Product Code	CSB-AP003211MOW
Abbreviation	Recombinant Rhesus macaque GM-CSF protein (Active)
Uniprot No.	Q9GL44
Form	Lyophilized powder
Storage Buffer	Lyophilized from a 0.2 µm filtered PBS, pH 7.4
Product Type	Colony Stimulating Factor
Immunogen Species	Macaca mulatta (Rhesus macaque)
Biological Activity	Fully biologically active when compared to standard. The ED50 as determined by a cell proliferation assay using human TF-1 cells is less than 0.1 ng/ml, corresponding to a specific activity of $>1.0 \times 10^7$ IU/mg.
Purity	$\geq 98\%$ as determined by SDS-PAGE.
Sequence	APARSPSPGT QPWEHVNAIQ EARRLLNLSR DTAAEMNKTV EVVSEMFDLQ EPSCLQTRLE LYKQGLQGSL TKLKGPLTMM ASHYKQHCPP TPETSCATQI ITFQSFKENL KDFLLVIPFD CWEPVQE
Research Area	Immunology
Source	E.coli
Target Names	GM-CSF
Expression Region	18-144aa
Notes	Repeated freezing and thawing is not recommended. Store working aliquots at 4°C for up to one week.
Tag Info	Tag-Free
Mol. Weight	14.4 kDa
Protein Length	Full Length of Mature Protein
PubMed ID	11596094
Image	

**Endotoxin**

Less than 1.0 EU/ μ g as determined by LAL method.

Reconstitution

We recommend that this vial be briefly centrifuged prior to opening to bring the contents to the bottom. Please reconstitute protein in deionized sterile water to a concentration of 0.1-1.0 mg/mL. We recommend to add 5-50% of glycerol (final concentration) and aliquot for long-term storage at -20°C/-80°C. Our default final concentration of glycerol is 50%. Customers could use it as reference.

Shelf Life

The shelf life is related to many factors, storage state, buffer ingredients, storage temperature and the stability of the protein itself. Generally, the shelf life of liquid form is 6 months at -20°C/-80°C. The shelf life of lyophilized form is 12 months at -20°C/-80°C.