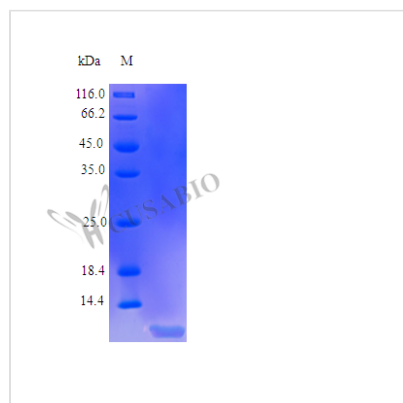




# Recombinant Human Insulin-like growth factor I protein (IGF1), 15N Stable Isotope Labeled (Active)

<b>Product Code</b>	CSB-AP002531HU
<b>Abbreviation</b>	Recombinant Human IGF1 protein, 15N Stable Isotope Labeled (Active)
<b>Uniprot No.</b>	P05019
<b>Storage Buffer</b>	0.2 μm filtered PBS, pH 7.0 ,lyophilized
<b>Product Type</b>	Growth Factors
<b>Immunogen Species</b>	Homo sapiens (Human)
<b>Biological Activity</b>	Fully biologically active when compared to standard. The ED50 as determined by a cell proliferation assay using serum free human MCF-7 cells is less than 2 ng/ml, corresponding to a specific activity of $>5.0 \times 10^5$ IU/mg.
<b>Purity</b>	$>97\%$ as determined by SDS-PAGE.
<b>Sequence</b>	GPETLCGAEL VDALQFVCGD RGFYFNKPTG YGSSSRRAPQ TGIVDECCFR SCDLRRLEMY CAPLKPAKSA
<b>Research Area</b>	Cancer
<b>Source</b>	E.Coli
<b>Target Names</b>	IGF1
<b>Expression Region</b>	49-118aa
<b>Tag Info</b>	Tag-Free
<b>Mol. Weight</b>	7.7 kDa
<b>Protein Length</b>	Full Length of Mature Protein
<b>PubMed ID</b>	6358902; 3002851; 2935423; 2937782; 3455760; 2082190; 2018498; 1372070; 8495408; 16541075; 15489334; 6382022; 632300; 3242681; 21076856; 24132240; 6189745; 2036417; 1319992; 8857020; 10391209

## Image



## Endotoxin

Less than 1.0 EU/μg as determined by LAL method.



## Shelf Life

The shelf life is related to many factors, storage state, buffer ingredients, storage temperature and the stability of the protein itself.

Generally, the shelf life of liquid form is 6 months at -20°C/-80°C. The shelf life of lyophilized form is 12 months at -20°C/-80°C.