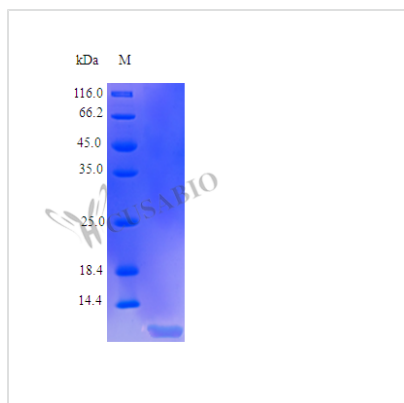




Recombinant Human Insulin-like growth factor I protein (IGF1) (Active)

Product Code	CSB-AP002541HU
Uniprot No.	P05019
Form	Lyophilized powder
Storage Buffer	Lyophilized from a 0.2 µm filtered PBS, pH 7.4
Product Type	Growth Factor
Immunogen Species	Homo sapiens (Human)
Biological Activity	Fully biologically active when compared to standard. The ED50 as determined by a cell proliferation assay using serum free human MCF-7 cells is less than 2 ng/ml, corresponding to a specific activity of $>5.0 \times 10^5$ IU/mg.
Purity	$\geq 97\%$ as determined by SDS-PAGE and HPLC.
Sequence	GPETLCGAEL VDALQFVCGD RGFYFNKPTG YGSSSRRAPQ TGIVDECCFR SCDLRRLEMY CAPLKPAKSA
Research Area	Cancer
Source	E.coli
Target Names	IGF1
Expression Region	49-118aa
Notes	Repeated freezing and thawing is not recommended. Store working aliquots at 4°C for up to one week.
Tag Info	Tag-Free
Mol. Weight	7.6 kDa
Protein Length	Full Length of Mature Protein
PubMed ID	6358902; 3002851; 2935423; 2937782; 3455760; 2082190; 2018498; 1372070; 8495408; 16541075; 15489334; 6382022; 632300; 3242681; 21076856; 24132240; 6189745; 2036417; 1319992; 8857020; 10391209

Image





Endotoxin

Less than 1.0 EU/ μ g as determined by LAL method.

Reconstitution

We recommend that this vial be briefly centrifuged prior to opening to bring the contents to the bottom. Please reconstitute protein in deionized sterile water to a concentration of 0.1-1.0 mg/mL. We recommend to add 5-50% of glycerol (final concentration) and aliquot for long-term storage at -20°C/-80°C. Our default final concentration of glycerol is 50%. Customers could use it as reference.

Shelf Life

The shelf life is related to many factors, storage state, buffer ingredients, storage temperature and the stability of the protein itself. Generally, the shelf life of liquid form is 6 months at -20°C/-80°C. The shelf life of lyophilized form is 12 months at -20°C/-80°C.