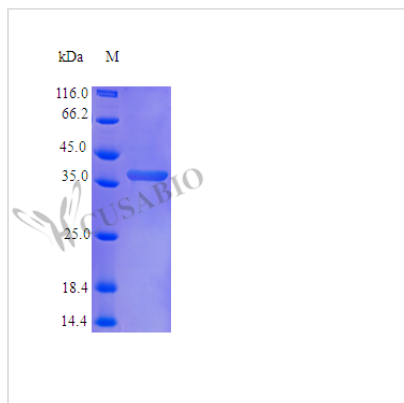




# Recombinant Human Protein NOV homolog protein (NOV) (Active)

<b>Product Code</b>	CSB-AP002511HU
<b>Abbreviation</b>	Recombinant Human NOV protein (Active)
<b>Uniprot No.</b>	P48745
<b>Form</b>	Lyophilized powder
<b>Storage Buffer</b>	Lyophilized from a 0.2 µm filtered PBS, pH 7.0
<b>Product Type</b>	Growth Factor
<b>Immunogen Species</b>	Homo sapiens (Human)
<b>Biological Activity</b>	Fully biologically active when compared to standard. The ED50 as determined by a cell proliferation assay using murine Balb/c 3T3 cells is less than 1.0 µg/ml, corresponding to a specific activity of >1000 IU/mg.
<b>Purity</b>	≥95% as determined by SDS-PAGE.
<b>Sequence</b>	M+QVAATQRCP PQCPGRCPAT PPTCAPGVRA VLDGCSCLV CARQRGESCS DLEPCDESSG LYCDRSADPS NQTGICTAVE GDNCVFDGVI YRSGEKFQPS CKFQCTCRDG QIGCVPRCQL DVLLPEPNCP APRKVEVPGE CCEKWICGPD EEDSLGGLTL AAYRPEATLG VEVSDSSVNC IEQTTEWTAC SKSCGMGFST RVTNRNRQCE MLKQTRLCMV RPCEQEPEQP TDKKGKKCLR TKKSLKAIHL QFKNCTSLHT YKPRFCGVCS DGRCCTPHNT KTIQAEFQCS PGQIVKKPVM VIGTCTCHTN CPKNNEAFLQ ELELKTTRGK M
<b>Research Area</b>	Immunology
<b>Source</b>	E.coli
<b>Target Names</b>	NOV
<b>Expression Region</b>	28-357aa
<b>Notes</b>	Repeated freezing and thawing is not recommended. Store working aliquots at 4°C for up to one week.
<b>Tag Info</b>	Tag-Free
<b>Mol. Weight</b>	36.2 kDa
<b>Protein Length</b>	Full Length of Mature Protein
<b>PubMed ID</b>	7520150; 8622864; 14702039; 15489334; 1756408; 15340161; 9927660
<b>Image</b>	


**Endotoxin**

Less than 1.0 EU/μg as determined by LAL method.

**Reconstitution**

We recommend that this vial be briefly centrifuged prior to opening to bring the contents to the bottom. Please reconstitute protein in deionized sterile water to a concentration of 0.1-1.0 mg/mL. We recommend to add 5-50% of glycerol (final concentration) and aliquot for long-term storage at -20°C/-80°C. Our default final concentration of glycerol is 50%. Customers could use it as reference.

**Shelf Life**

The shelf life is related to many factors, storage state, buffer ingredients, storage temperature and the stability of the protein itself. Generally, the shelf life of liquid form is 6 months at -20°C/-80°C. The shelf life of lyophilized form is 12 months at -20°C/-80°C.