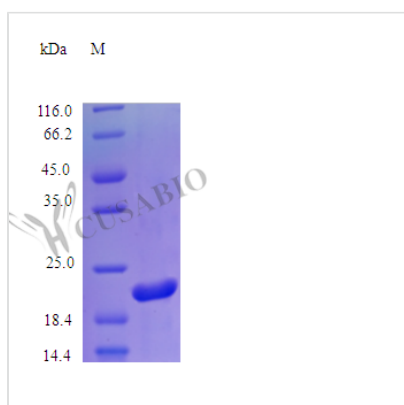




Recombinant Human Somatotropin protein (GH1) (Active)

Product Code	CSB-AP000011HU
Abbreviation	Recombinant Human GH1 protein (Active)
Uniprot No.	P01241
Storage Buffer	0.2 μm filtered 20mM PB, pH 7.0, with 3% Mannitol, lyophilized
Product Type	Hormones
Immunogen Species	Homo sapiens (Human)
Biological Activity	Fully biologically active when compared to standard. The ED50 as determined by a cell proliferation assay using rat Nb2-11 lymphoma cells is less than 0.1 ng/ml, corresponding to a specific activity of $>1.0 \times 10^7$ IU/mg.
Purity	>98% as determined by SDS-PAGE.
Sequence	FPTIPLSRLF DNAMLRHRL HQLAFDTYQE FEEAYIPKEQ KYSFLQNPQT SLCFSESIPT PSNREETQQK SNLELLRISL LLIQSWLEPV QFLRSVFANS LVYGASDSNV YDLLKDLEEG IQTLMGRLED GSPRTGQIFK QTYSKFDTNS HNDDALLKNY GLLYCFRKDM DKVETFLRIV QCRSVEGSCG F
Research Area	Signal Transduction
Source	E.Coli
Target Names	GH1
Expression Region	27-217aa
Tag Info	Tag-Free
Mol. Weight	22.0 kDa
Protein Length	Full Length of Mature Protein
PubMed ID	386281; 377496; 6269091; 7169009; 2744760; 18473352; 16625196; 10931946; 15489334; 3912261; 5810834; 5144027; 4675454; 5279046; 5279528; 7462247; 7356479; 7028740; 8364549; 14997482; 10393484; 16807684; 3447173; 1549776; 7984244; 8943276; 8552145; 9152628

Image





Endotoxin

Less than 1.0 EU/μg as determined by LAL method.

Shelf Life

The shelf life is related to many factors, storage state, buffer ingredients, storage temperature and the stability of the protein itself.

Generally, the shelf life of liquid form is 6 months at -20°C/-80°C. The shelf life of lyophilized form is 12 months at -20°C/-80°C.