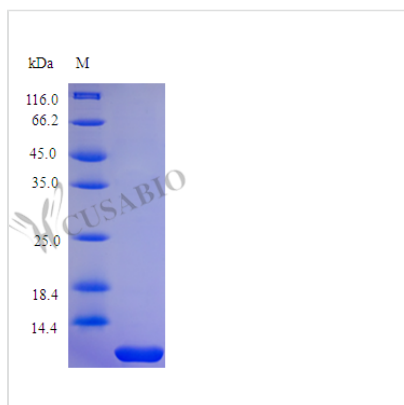




# Recombinant Human Parathyroid hormone protein (PTH), partial (Active)

<b>Product Code</b>	CSB-AP000031HU
<b>Abbreviation</b>	Recombinant Human PTH protein, partial (Active)
<b>Uniprot No.</b>	P01270
<b>Form</b>	Lyophilized powder
<b>Storage Buffer</b>	Lyophilized from a 0.2 µm filtered PBS, pH 7.4
<b>Product Type</b>	Hormone
<b>Immunogen Species</b>	Homo sapiens (Human)
<b>Biological Activity</b>	Fully biologically active when compared to standard. The specific activity is determined by UMR106 cell/cAMP method, corresponding to a specific activity of $>1.0 \times 10^4$ IU/mg.
<b>Purity</b>	$>97\%$ as determined by SDS-PAGE.
<b>Sequence</b>	LMHNLGKHLN SMERVEWLRK KLQDVHNF
<b>Research Area</b>	Signal Transduction
<b>Source</b>	E.coli
<b>Target Names</b>	PTH
<b>Expression Region</b>	38-65aa
<b>Notes</b>	Repeated freezing and thawing is not recommended. Store working aliquots at 4°C for up to one week.
<b>Tag Info</b>	Tag-Free
<b>Mol. Weight</b>	3.4 kDa
<b>Protein Length</b>	Partial
<b>PubMed ID</b>	6950381; 6220408; 15489334; 7829495; 4833516; 15340161; 4521809; 728431; 1125201; 4474131; 4721748; 21076856; 2069952; 8344299; 7797503; 10623601; 10837469; 18375760; 2212001; 10523031; 18056632

## Image





---

**Endotoxin**

Less than 1.0 EU/ $\mu$ g as determined by LAL method.

---

**Reconstitution**

We recommend that this vial be briefly centrifuged prior to opening to bring the contents to the bottom. Please reconstitute protein in deionized sterile water to a concentration of 0.1-1.0 mg/mL. We recommend to add 5-50% of glycerol (final concentration) and aliquot for long-term storage at -20°C/-80°C. Our default final concentration of glycerol is 50%. Customers could use it as reference.

---

**Shelf Life**

The shelf life is related to many factors, storage state, buffer ingredients, storage temperature and the stability of the protein itself. Generally, the shelf life of liquid form is 6 months at -20°C/-80°C. The shelf life of lyophilized form is 12 months at -20°C/-80°C.