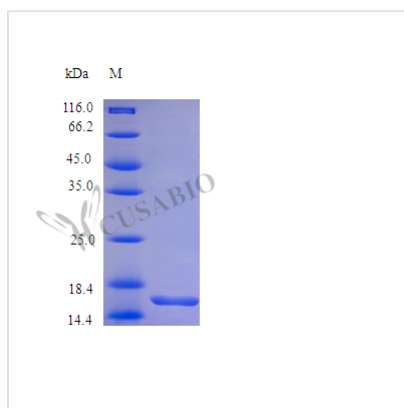




# Recombinant Human Leptin protein (LEP)

<b>Product Code</b>	CSB-AP000061HU
<b>Abbreviation</b>	Recombinant Human LEP protein (Active)
<b>Uniprot No.</b>	P41159
<b>Storage Buffer</b>	0.2 μm filtered 50 mm PB, pH 3.5, with 0.02 % Tween-20 ,lyophilized
<b>Product Type</b>	Hormones
<b>Immunogen Species</b>	Homo sapiens (Human)
<b>Biological Activity</b>	Fully biologically active when compared to standard. The ED50 as determined by a chemotaxis bioassay using human Leptin R transfected BaF3 murine proB cells is less than 2 ng/ml, corresponding to a specific activity of >5.0x10 <sup>5</sup> IU/mg.
<b>Purity</b>	≥97% as determined by SDS-PAGE.
<b>Sequence</b>	VPIQKVQDDT KTLIKTIVTR INDISHTQSV SSKQKV TGLD FIPGLHPILT LSKMDQTLAV YQQILTSMP S RNVIQISNDL ENLRDLLHVL AFSK SCHLPW ASGLETLDL SGGVLEASGYS TEVVALSRLQ GSLQDMLWQL DLSPGC
<b>Research Area</b>	Signal Transduction
<b>Source</b>	E.Coli
<b>Target Names</b>	LEP
<b>Expression Region</b>	22-167aa
<b>Tag Info</b>	Tag-Free
<b>Mol. Weight</b>	16.0 kDa
<b>Protein Length</b>	Full Length of Mature Protein
<b>PubMed ID</b>	7984236; 7789654; 8626726; 7499240; 8621021; 15489334; 10428856; 9166907; 9144295; 9500540

## Image



<b>Endotoxin</b>	Less than 1.0 EU/μg as determined by LAL method.
<b>Shelf Life</b>	The shelf life is related to many factors, storage state, buffer ingredients, storage temperature and the stability of the protein itself.



Generally, the shelf life of liquid form is 6 months at -20°C/-80°C. The shelf life of lyophilized form is 12 months at -20°C/-80°C.