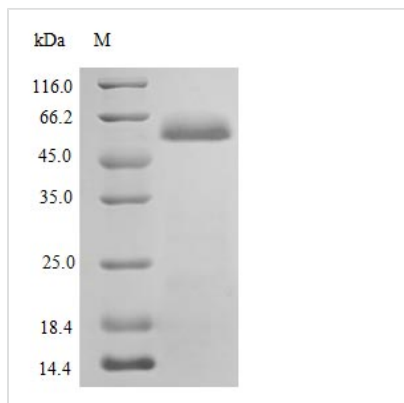




# Recombinant Human Protein disulfide-isomerase protein (P4HB), partial (Active)

<b>Product Code</b>	CSB-AP000091HU
<b>Abbreviation</b>	Recombinant Human P4HB protein, partial (Active)
<b>Uniprot No.</b>	P07237
<b>Storage Buffer</b>	0.2 μm filtered PBS, pH 7.0 ,lyophilized
<b>Product Type</b>	Enzymes
<b>Immunogen Species</b>	Homo sapiens (Human)
<b>Biological Activity</b>	Thiol Protein Reductase Activity is 0.001 Δ650nm/ min-2, determined by measuring the turbidityincrease at 650 nm due to insulin reduction.The activity is expressed as the ratio of the slope of a linear part of the turbidity curve to the lag time.
<b>Purity</b>	≥95% as determined by SDS-PAGE.
<b>Sequence</b>	MRGSGSHHHHHH+ APEEEDHVLVLRKSNFAEALAAHKYLLVEFYAPWCGHCKALAPEYAKAAGKLK AEGSEIRLAKVDATEESDLAQQYGVRYPTIKFFRNGDTASPKEYTAGREADD IVNWLKKRTGPAATTLPDGAAAESLVESSEVAVIGFFKDVESDSAQFLQAAEA IDDIPFGITSNSDVFVSKYQLDKDGVVLFKKFDEGRNFEFEVTKENLLDFIKHN QLPLVIEFTEQTAPKIFGGEIKTHILLFLPKSVSDYDYGKLSNFKTAAESFKGKILFI FIDSDHTDNQRILEFFGLKKEECPAVRLITLEEEMTKYKPESEELTAERITEFCH RFLEGKIKPHLMSQELPEDWDKQPVKVLVGKNFEDVAFDEKKNVFVEFYAPW CGHCKQLAPIWDKLGETYKDHENIVIAKMDSTANEVEAVKVHSFPTLKFFPASA DRTVIDYNGERTLDGFKKFLESGGQDGAGDDDDLEDLEEAEPPDMEEDDDQK AVKDEL
<b>Research Area</b>	Signal Transduction
<b>Source</b>	E.Coli
<b>Target Names</b>	P4HB
<b>Expression Region</b>	19-508aa
<b>Tag Info</b>	N-terminal 6xHis-tagged
<b>Mol. Weight</b>	56.6 kDa
<b>Protein Length</b>	Partial
<b>PubMed ID</b>	3034602; 3611107; 2846539; 14702039; 15489334; 1597478; 9150948; 12665801; 2079031; 1286669; 9399589; 3342239; 1699755; 10636893; 11181151; 12485997; 12095988; 12218051; 12218052; 12643545; 15158710; 14592831; 15644496; 17081065; 21269460; 24275569; 25683

Image

**Endotoxin**

Less than 1.0 EU/ $\mu$ g as determined by LAL method.

**Shelf Life**

The shelf life is related to many factors, storage state, buffer ingredients, storage temperature and the stability of the protein itself.

Generally, the shelf life of liquid form is 6 months at -20°C/-80°C. The shelf life of lyophilized form is 12 months at -20°C/-80°C.