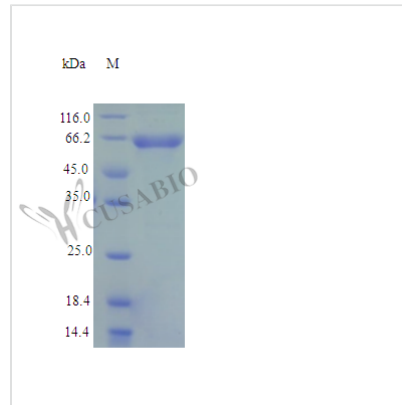




Recombinant Human NAD-dependent malic enzyme, mitochondrial protein (ME2) (Active)

Product Code	CSB-AP000101HU
Abbreviation	Recombinant Human ME2 protein (Active)
Uniprot No.	P23368
Form	Lyophilized powder
Storage Buffer	Lyophilized from a 0.2µm filtered PBS, pH 7.4.
Product Type	Enzyme
Immunogen Species	Homo sapiens (Human)
Biological Activity	Malic Enzyme activity was assayed spectrophotometrically at 340nm as described in Mandela and Sauer (1975). The standard reaction mixture contained 50 mM Tris-HCl, 3 mM MnCl ₂ , 5 mM malate, 0.12 mM NADP ⁺ , 2.5 mM fumarate. Assay was performed in a Beckman spectrophotometer. The Km value is 1.5 ± 0.6 mM
Purity	≥95% as determined by SDS-PAGE.
Sequence	MLHIKEKKGKPLMLNPRNTNKGMAFTLQERQMLGLQGLLPPKIETQDIQALRFHR NLKKMTSPLEKYIYIMGIQERNEKLFYRILQDDIESLMPIVYTPTVGLACSQYGHI FRRPKGLFISISDRGHVRSIVDNWPENHVKAVVVTGGERILGLGDLGVYGMGIP VGKLCLYTACAGIRPDRCLPVCIDVGTDNIALLKDPFYMGLYQKRDRRTQQYDD LIDEFMKAITDRYGRNTLIQFEDFGNHNAFRFLRKYREKYCTFNDDIQGTAAVA LAGLLAAQKVISKPISEHKILFLGAGEAALGIANLIVMSMVENGLSEQEAQKKIW MFDKYGLLVKGRKAKIDSYQEPFTHSAPESIPDTFEDAVNILKPSTIIGVAGAGR LFTPDVIRAMASINERPVIFALSNPQAECTAEEAYTLTEGRCLFASGSPFGP VKLTDGRVFTPGQGNNVYIFPGVALAVILCNTRHISDSVFLEAAKALTSQLTDE ELAQGRLYPPLANIQEVSINIAIKVTEYLYANKMAFRYPEPEDKAKYVKERTWR SEYDSELLPDVYEWPEASSPPVITE+HHHHHH
Research Area	Signal Transduction
Source	E.coli
Target Names	ME2
Expression Region	19-584aa
Notes	Repeated freezing and thawing is not recommended. Store working aliquots at 4°C for up to one week.
Tag Info	C-terminal 6xHis-tagged
Mol. Weight	64.4 kDa
Protein Length	Full Length of Mature Protein
PubMed ID	1993674; 11401430; 14702039; 16177791; 15489334; 12665801; 19608861; 21269460; 24275569; 10467136; 10700286; 12121650; 12962632

**Image****Endotoxin**

Less than 1.0 EU/ μ g as determined by LAL method.

Reconstitution

We recommend that this vial be briefly centrifuged prior to opening to bring the contents to the bottom. Please reconstitute protein in deionized sterile water to a concentration of 0.1-1.0 mg/mL. We recommend to add 5-50% of glycerol (final concentration) and aliquot for long-term storage at -20°C/-80°C. Our default final concentration of glycerol is 50%. Customers could use it as reference.

Shelf Life

The shelf life is related to many factors, storage state, buffer ingredients, storage temperature and the stability of the protein itself.

Generally, the shelf life of liquid form is 6 months at -20°C/-80°C. The shelf life of lyophilized form is 12 months at -20°C/-80°C.