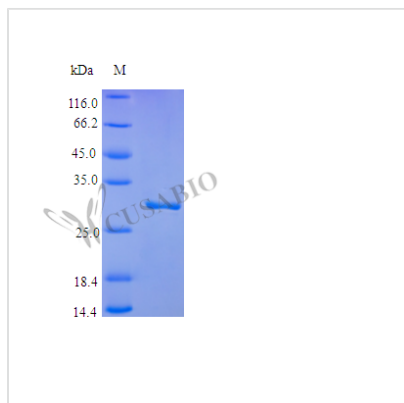




# Recombinant Human Plasminogen protein (PLG), partial (Active)

<b>Product Code</b>	CSB-AP002261HU
<b>Abbreviation</b>	Recombinant Human PLG protein, partial (Active)
<b>Uniprot No.</b>	P00747
<b>Form</b>	Lyophilized powder
<b>Storage Buffer</b>	Lyophilized from a 0.2 µm filtered 20 mM NaAc, pH 5.5, 4 % mannitol
<b>Product Type</b>	Other
<b>Immunogen Species</b>	Homo sapiens (Human)
<b>Biological Activity</b>	Fully biologically active when compared to standard. The specific activity determined by an assay on anti-proliferation and anti-migration using endothelial cells in vitro and anti-angiogenesis in vivo is 5.5x10 <sup>5</sup> IU/mg.
<b>Purity</b>	>95% as determined by SDS-PAGE.
<b>Sequence</b>	VYLSECKTGN GKNYRGTMSK TKNGITCQKW SSTSPHRPRF SPATHPSEGL EENYCRNPND DPQGPWCYTT DPEKRYDYCD ILECEEECMH CSGENYDGKI SKTMSGLECQ AWDSQSPHAH GYIPSKFPNK NLKKNYCRNP DRELRPWCFT TDPNKRWELC DIPRCTTPPP SSGPTYQCLK GTGENYRGNV AVTVSGHTCQ HWSAQTPHTH N RTPENFPCK NLDENYCRNP DGKRAPWCHT TNSQVRWEYC KIPSCDSSP
<b>Research Area</b>	Cancer
<b>Source</b>	E.coli
<b>Target Names</b>	PLG
<b>Expression Region</b>	98-356aa
<b>Notes</b>	Repeated freezing and thawing is not recommended. Store working aliquots at 4°C for up to one week.
<b>Tag Info</b>	Tag-Free
<b>Mol. Weight</b>	29.7 kDa
<b>Protein Length</b>	Partial
<b>PubMed ID</b>	2318848; 3030813; 14574404; 15489334; 122932; 6148961; 126863; 142009; 4694729; 4240117; 6919539; 6094526; 9201958; 3356193; 9102401; 9054441; 7525077; 9102221; 9548733; 10077593; 10889192; 14699093; 16043488; 18780401; 2143188; 19712047; 24275569; 165714

Image

**Endotoxin**

Less than 1.0 EU/μg as determined by LAL method.

**Reconstitution**

We recommend that this vial be briefly centrifuged prior to opening to bring the contents to the bottom. Please reconstitute protein in deionized sterile water to a concentration of 0.1-1.0 mg/mL. We recommend to add 5-50% of glycerol (final concentration) and aliquot for long-term storage at -20°C/-80°C. Our default final concentration of glycerol is 50%. Customers could use it as reference.

**Shelf Life**

The shelf life is related to many factors, storage state, buffer ingredients, storage temperature and the stability of the protein itself. Generally, the shelf life of liquid form is 6 months at -20°C/-80°C. The shelf life of lyophilized form is 12 months at -20°C/-80°C.