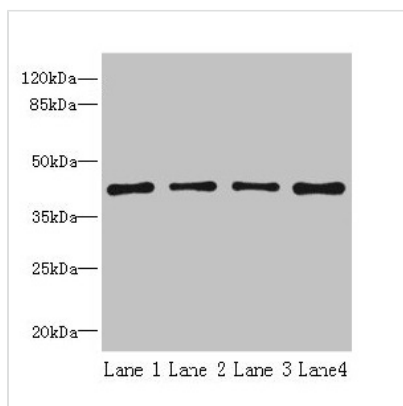




S1PR1 Antibody

Product Code	CSB-PA020650LA01HU
Storage	Upon receipt, store at -20°C or -80°C. Avoid repeated freeze.
Uniprot No.	P21453
Immunogen	Recombinant Human Sphingosine 1-phosphate receptor 1 protein (311-382AA)
Raised In	Rabbit
Species Reactivity	Human, Mouse
Tested Applications	ELISA, WB, IHC, IF; Recommended dilution: WB:1:500-1:5000, IHC:1:20-1:200, IF:1:50-1:200
Form	Liquid
Conjugate	Non-conjugated
Storage Buffer	Preservative: 0.03% Proclin 300 Constituents: 50% Glycerol, 0.01M PBS, PH 7.4
Purification Method	>95%, Protein G purified
Isotype	IgG
Clonality	Polyclonal
Alias	Sphingosine 1-phosphate receptor 1 (S1P receptor 1) (S1P1) (Endothelial differentiation G-protein coupled receptor 1) (Sphingosine 1-phosphate receptor Edg-1) (S1P receptor Edg-1) (CD antigen CD363), S1PR1, CHEDG1 EDG1
Immunogen Species	Homo sapiens (Human)
Research Area	Cell Biology
Target Names	S1PR1

Image



Western blot

All lanes: S1PR1 antibody at 2µg/ml

Lane 1: Jurkat whole cell lysate

Lane 2: A375 whole cell lysate

Lane 3: Mouse thymus tissue

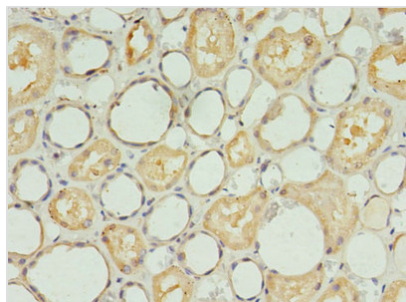
Lane 4: HepG2 whole cell lysate

Secondary

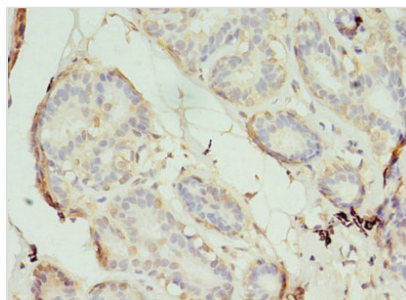
Goat polyclonal to rabbit IgG at 1/10000 dilution

Predicted band size: 43 kDa

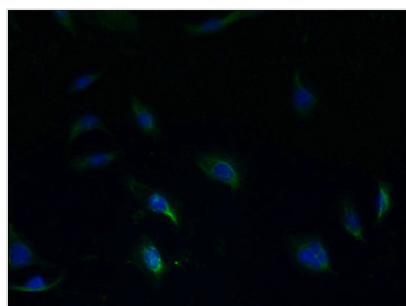
Observed band size: 43 kDa



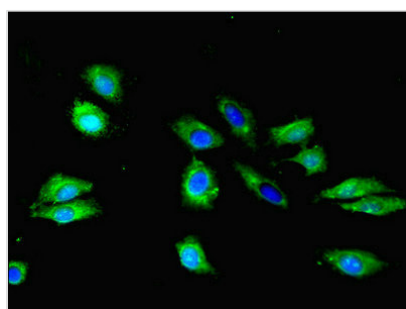
Immunohistochemistry of paraffin-embedded human kidney tissue using CSB-PA020650LA01HU at dilution of 1:100



Immunohistochemistry of paraffin-embedded human breast cancer using CSB-PA020650LA01HU at dilution of 1:100



Immunofluorescent analysis of HepG2 cells using CSB-PA020650LA01HU at dilution of 1:100 and Alexa Fluor 488-conjugated AffiniPure Goat Anti-Rabbit IgG(H+L)



Immunofluorescent analysis of HeLa cells using CSB-PA020650LA01HU at dilution of 1:100 and Alexa Fluor 488-conjugated AffiniPure Goat Anti-Rabbit IgG(H+L)

Usage

For Research Use Only. Not for use in diagnostic or therapeutic procedures.