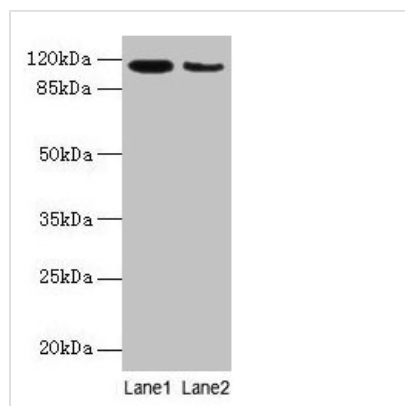




ATP2A2 Antibody

Product Code	CSB-PA002333LA01HU
Storage	Upon receipt, store at -20°C or -80°C. Avoid repeated freeze.
Uniprot No.	P16615
Immunogen	Recombinant Human Sarcoplasmic/endoplasmic reticulum calcium ATPase 2 protein (314-756AA)
Raised In	Rabbit
Species Reactivity	Human, Mouse
Tested Applications	ELISA, WB, IHC, IF; Recommended dilution: WB:1:500-1:2000, IHC:1:20-1:200, IF:1:50-1:200
Form	Liquid
Conjugate	Non-conjugated
Storage Buffer	Preservative: 0.03% Proclin 300 Constituents: 50% Glycerol, 0.01M PBS, PH 7.4
Purification Method	>95%, Protein G purified
Isotype	IgG
Clonality	Polyclonal
Alias	Sarcoplasmic/endoplasmic reticulum calcium ATPase 2 (SERCA2) (SR Ca(2+)-ATPase 2) (EC 3.6.3.8) (Calcium pump 2) (Calcium-transporting ATPase sarcoplasmic reticulum type, slow twitch skeletal muscle isoform) (Endoplasmic reticulum class 1/2 Ca(2+) ATPase), ATP2A2, ATP2B
Immunogen Species	Homo sapiens (Human)
Research Area	Signal Transduction
Target Names	ATP2A2

Image



Western blot

All lanes: ATP2A2 antibody at 6µg/ml

Lane 1: Mouse heart tissue

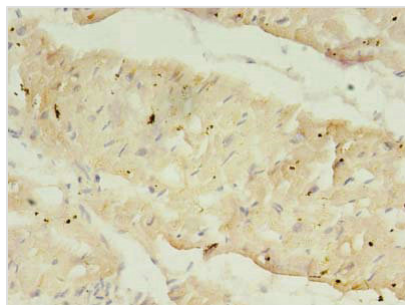
Lane 2: Mouse skeletal muscle tissue

Secondary

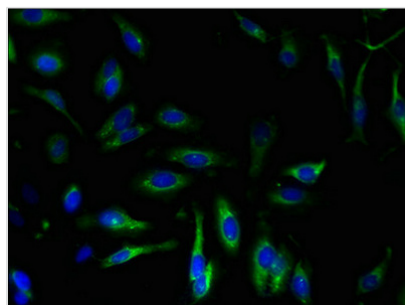
Goat polyclonal to rabbit IgG at 1/10000 dilution

Predicted band size: 115, 110, 112 kDa

Observed band size: 115 kDa



Immunohistochemistry of paraffin-embedded human heart tissue using CSB-PA002333LA01HU at dilution of 1:100



Immunofluorescent analysis of HeLa cells using CSB-PA002333LA01HU at dilution of 1:100 and Alexa Fluor 488-conjugated AffiniPure Goat Anti-Rabbit IgG(H+L)

Usage

For Research Use Only. Not for use in diagnostic or therapeutic procedures.