



ANGPTL7 Antibody

| | |
|----------------------------|--|
| Product Code | CSB-PA001715LA01HU |
| Storage | Upon receipt, store at -20°C or -80°C. Avoid repeated freeze. |
| Uniprot No. | O43827 |
| Immunogen | Recombinant Human Angiopoietin-related protein 7 protein (27-296AA) |
| Raised In | Rabbit |
| Species Reactivity | Human |
| Tested Applications | ELISA, WB, IHC; Recommended dilution: WB:1:500-1:5000, IHC:1:20-1:200 |
| Form | Liquid |
| Conjugate | Non-conjugated |
| Storage Buffer | Preservative: 0.03% Proclin 300 Constituents: 50% Glycerol, 0.01M PBS, PH 7.4 |
| Purification Method | >95%, Protein G purified |
| Isotype | IgG |
| Clonality | Polyclonal |
| Alias | Angiopoietin-related protein 7 (Angiopoietin-like factor) (Angiopoietin-like protein 7) (Cornea-derived transcript 6 protein), ANGPTL7, CDT6 |
| Immunogen Species | Homo sapiens (Human) |
| Research Area | Neuroscience |
| Target Names | ANGPTL7 |

Image



Western blot

All lanes: ANGPTL7 antibody at 2µg/ml

Lane 1: MCF-7 whole cell lysate

Lane 2: Colo320 whole cell lysate

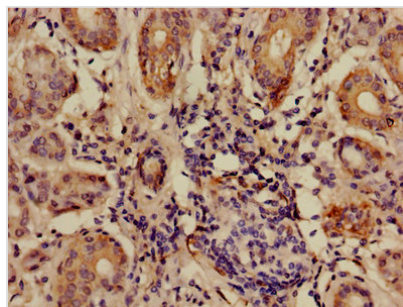
Lane 3: HepG2 whole cell lysate

Secondary

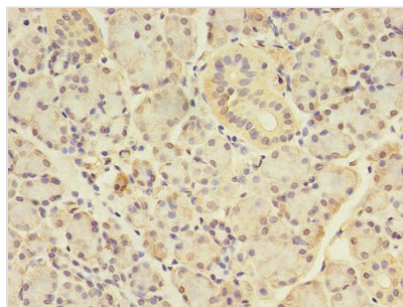
Goat polyclonal to rabbit IgG at 1/10000 dilution

Predicted band size: 41 kDa

Observed band size: 41 kDa



Immunohistochemistry of paraffin-embedded human salivary gland tissue using CSB-PA001715LA01HU at dilution of 1:100



Immunohistochemistry of paraffin-embedded human pancreatic tissue using CSB-PA001715LA01HU at dilution of 1:100