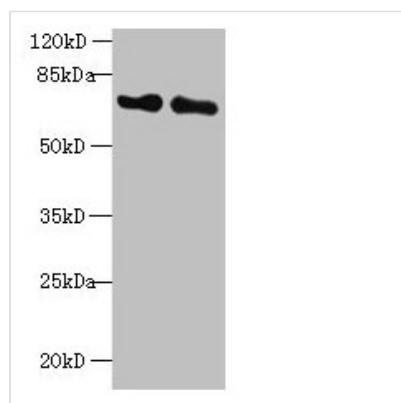




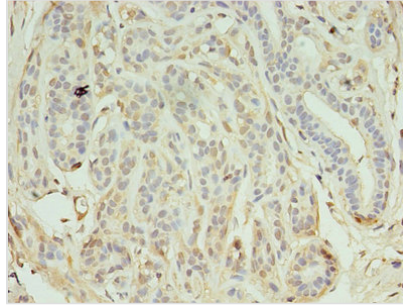
KEAP1 Antibody

Product Code	CSB-PA012147LA01HU
Storage	Upon receipt, store at -20°C or -80°C. Avoid repeated freeze.
Uniprot No.	Q14145
Immunogen	Recombinant Human Kelch-like ECH-associated protein 1 protein (1-624AA)
Raised In	Rabbit
Species Reactivity	Human, Mouse
Tested Applications	ELISA, WB, IHC; Recommended dilution: WB:1:500-1:5000, IHC:1:20-1:200
Form	Liquid
Conjugate	Non-conjugated
Storage Buffer	Preservative: 0.03% Proclin 300 Constituents: 50% Glycerol, 0.01M PBS, PH 7.4
Purification Method	>95%, Protein G purified
Isotype	IgG
Clonality	Polyclonal
Alias	Kelch-like ECH-associated protein 1 (Cytosolic inhibitor of Nrf2) (INrf2) (Kelch-like protein 19), KEAP1, INRF2 KIAA0132 KLHL19
Immunogen Species	Homo sapiens (Human)
Research Area	Epigenetics and Nuclear Signaling
Target Names	KEAP1

Image



Western blot
 All lanes: KEAP1 antibody at 2µg/ml
 Lane 1: Mouse kidney tissue
 Lane 2: NIH/3T3 whole cell lysate
 Secondary
 Goat polyclonal to rabbit IgG at 1/10000 dilution
 Predicted band size: 70 kDa
 Observed band size: 70 kDa



Immunohistochemistry of paraffin-embedded human breast cancer using CSB-PA012147LA01HU at dilution of 1:100

Usage

For Research Use Only. Not for use in diagnostic or therapeutic procedures.