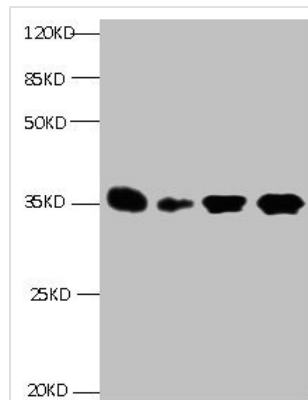




# IGFBP1 Monoclonal Antibody

<b>Product Code</b>	CSB-MA088331A0m
<b>Storage</b>	Upon receipt, store at -20°C or -80°C. Avoid repeated freeze.
<b>Uniprot No.</b>	P08833
<b>Immunogen</b>	Recombinant Human IGFBP1 Protein
<b>Raised In</b>	mouse
<b>Species Reactivity</b>	Human,Mouse
<b>Specificity</b>	specific for human IGFBP1 denatured and native forms.
<b>Tested Applications</b>	ELISA,WB;Recommended dilution:WB:1:500-1:5000
<b>Relevance</b>	This gene is a member of the Insulin-like growth factor-binding protein (IGFBP) family and encodes a protein with an IGFBP domain and a type-I thyroglobulin domain. The protein binds both insulin-like growth factors (IGFs) I and II and circulates in the plasma. Binding of this protein prolongs the half-life of the IGFs and alters their interaction with cell surface receptors. Alternate transcriptional splice variants, encoding different isoforms, have been characterized.
<b>Form</b>	liquid
<b>Conjugate</b>	Non-conjugated
<b>Storage Buffer</b>	Preservative: 15mmol/L NaN3Constituents: 0.1mol/L NaCl
<b>Purification Method</b>	>95%,Protein G purified
<b>Isotype</b>	IgG1
<b>Clonality</b>	monoclonal
<b>Alias</b>	IGFBP1,Insulin-like growth factor-binding protein 1,IGF-binding protein 1
<b>Product Type</b>	Monoclonal Antibody
<b>Immunogen Species</b>	Homo sapiens (Human)
<b>Gene Names</b>	IGFBP1
<b>Clone No.</b>	1E1B2

## Image



All lanes: Mouse anti- Human Insulin-like growth factor-binding protein 1 monoclonal antibody at 1μg/ml  
 Lane 1:Pyrolysis liquid human placental tissue 7.5μg/ml  
 Lane 2:Pyrolysis liquid human placental tissue 3.25μg/ml  
 Lane 3:IGFBP1 transfected SF9 cell lysate  
 Lane 4:human amniotic fluid  
 Secondary Goat polyclonal to Mouse IgG at 1/5000 dilution  
 Predicted band size : 28kd  
 Observed band size : 35kd

