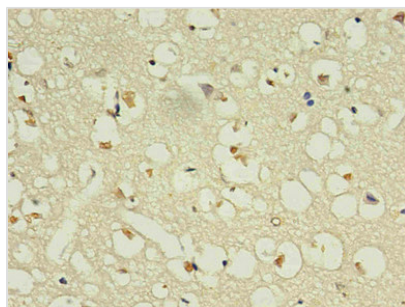




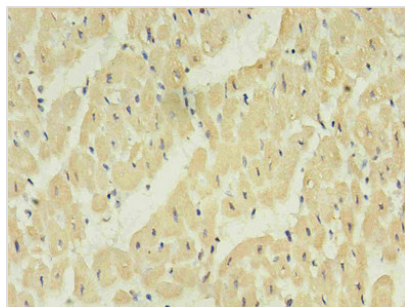
# NPPB Monoclonal Antibody

<b>Product Code</b>	CSB-MA168601A0m
<b>Storage</b>	Upon receipt, store at -20°C or -80°C. Avoid repeated freeze.
<b>Uniprot No.</b>	P16860
<b>Immunogen</b>	Recombinant Human NPPB Protein
<b>Raised In</b>	mouse
<b>Species Reactivity</b>	Human
<b>Tested Applications</b>	ELISA,IHC;Recommended dilution:IHC:1:50-1:500
<b>Relevance</b>	Cardiac hormone which may function as a paracrine antifibrotic factor in the heart. Also plays a key role in cardiovascular homeostasis through natriuresis, diuresis, vasorelaxation, and inhibition of renin and aldosterone secretion. Specifically binds and stimulates the cGMP production of the NPR1 receptor. Binds the clearance receptor NPR3.
<b>Form</b>	liquid
<b>Conjugate</b>	Non-conjugated
<b>Storage Buffer</b>	Preservative: 0.03% Proclin 300Constituents: 50% Glycerol, 0.01M PBS, PH 7.4
<b>Purification Method</b>	>95%,Protein G purified
<b>Isotype</b>	IgG2b
<b>Clonality</b>	monoclonal
<b>Product Type</b>	Monoclonal Antibody
<b>Immunogen Species</b>	Homo sapiens (Human)
<b>Target Names</b>	NPPB
<b>Clone No.</b>	1E1F4

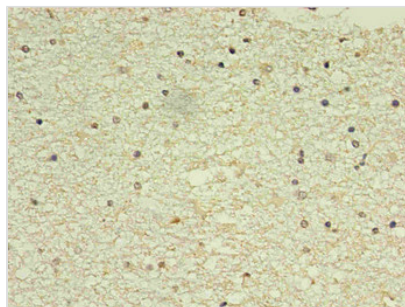
## Image



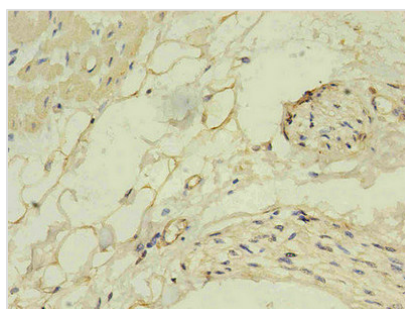
Immunohistochemistry of paraffin-embedded human brain using CSB-MA168601A0m in 30µg/ml dilute concentrations.



Immunohistochemistry of paraffin-embedded human heart using CSB-MA168601A0m in 30 $\mu$ g/ml dilute concentrations.



Immunohistochemistry of paraffin-embedded human brain using CSB-MA168601A0m in 30 $\mu$ g/ml dilute concentrations.



Immunohistochemistry of paraffin-embedded human brain using CSB-MA168601A0m in 30 $\mu$ g/ml dilute concentrations.

**Usage**

For Research Use Only. Not for use in diagnostic or therapeutic procedures.