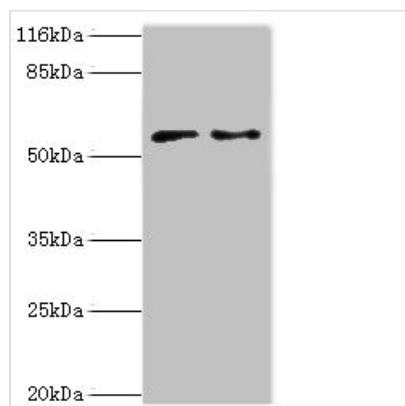




# CRISPLD2 Antibody

<b>Product Code</b>	CSB-PA884430LA01HU
<b>Storage</b>	Upon receipt, store at -20°C or -80°C. Avoid repeated freeze.
<b>Uniprot No.</b>	Q9H0B8
<b>Immunogen</b>	Recombinant Human Cysteine-rich secretory protein LCCL domain-containing 2 protein (40-305AA)
<b>Raised In</b>	Rabbit
<b>Species Reactivity</b>	Human
<b>Tested Applications</b>	ELISA, WB; Recommended dilution: WB:1:500-1:1000
<b>Form</b>	Liquid
<b>Conjugate</b>	Non-conjugated
<b>Storage Buffer</b>	Preservative: 0.03% Proclin 300 Constituents: 50% Glycerol, 0.01M PBS, PH 7.4
<b>Purification Method</b>	>95%, Protein G purified
<b>Isotype</b>	IgG
<b>Clonality</b>	Polyclonal
<b>Alias</b>	Cysteine-rich secretory protein LCCL domain-containing 2 (Cysteine-rich secretory protein 11) (CRISP-11) (LCCL domain-containing cysteine-rich secretory protein 2), CRISPLD2, CRISP11 LCRISP2
<b>Immunogen Species</b>	Homo sapiens (Human)
<b>Research Area</b>	Signal Transduction
<b>Target Names</b>	CRISPLD2

## Image



### Western blot

All lanes: CRISPLD2 antibody at 2µg/ml

Lane 1: Jurkat whole cell lysate

Lane 2: CEM whole cell lysate

Secondary

Goat polyclonal to rabbit IgG at 1/10000 dilution

Predicted band size: 56, 52, 43, 18, 14 kDa

Observed band size: 56 kDa

## Usage

For Research Use Only. Not for use in diagnostic or therapeutic procedures.