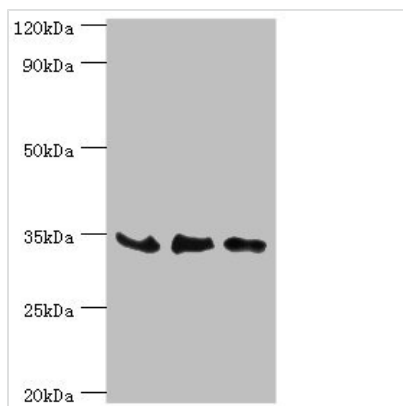




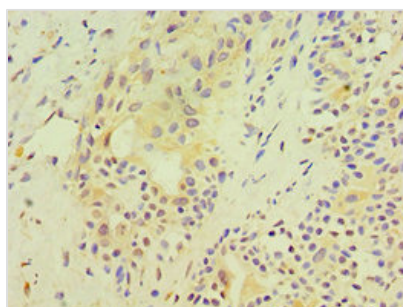
SRM Antibody

Product Code	CSB-PA022668DSR1HU
Storage	Upon receipt, store at -20°C or -80°C. Avoid repeated freeze.
Uniprot No.	P19623
Immunogen	Recombinant Human Spermidine synthase protein (1-302AA)
Raised In	Rabbit
Species Reactivity	Human
Tested Applications	ELISA, WB, IHC; Recommended dilution: WB:1:500-1:2000, IHC:1:20-1:200
Form	Liquid
Conjugate	Non-conjugated
Storage Buffer	PBS with 0.02% sodium azide, 50% glycerol, pH7.3.
Purification Method	Antigen Affinity Purified
Isotype	IgG
Clonality	Polyclonal
Alias	Spermidine synthase (SPDSY) (EC 2.5.1.16) (Putrescine aminopropyltransferase), SRM, SPS1 SRML1
Immunogen Species	Homo sapiens (Human)
Research Area	Signal Transduction
Target Names	SRM

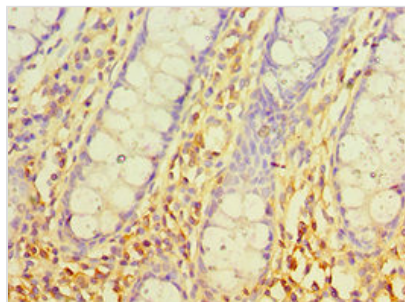
Image



Western blot
 All lanes: SRM antibody at 8µg/ml
 Lane 1: PC-3 whole cell lysate
 Lane 2: Hela whole cell lysate
 Lane 3: HepG2 whole cell lysate
 Secondary
 Goat polyclonal to rabbit IgG at 1/10000 dilution
 Predicted band size: 34 kDa
 Observed band size: 34 kDa



Immunohistochemistry of paraffin-embedded human breast cancer using CSB-PA022668DSR1HU at dilution of 1:100



Immunohistochemistry of paraffin-embedded human colon tissue using CSB-PA022668DSR1HU at dilution of 1:100

Usage

For Research Use Only. Not for use in diagnostic or therapeutic procedures.