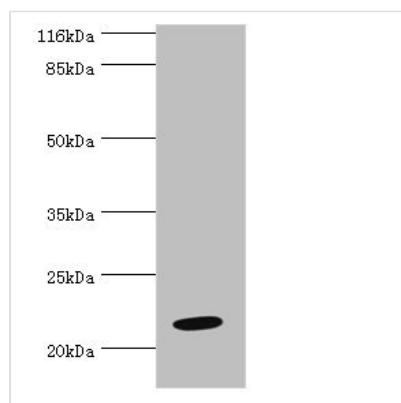




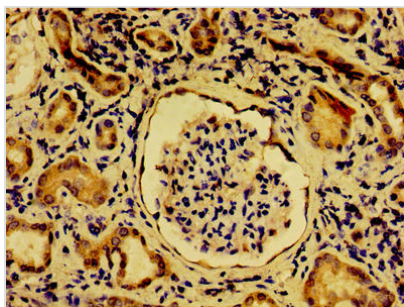
NME6 Antibody

| | |
|----------------------------|---|
| Product Code | CSB-PA015891LA01HU |
| Storage | Upon receipt, store at -20°C or -80°C. Avoid repeated freeze. |
| Uniprot No. | O75414 |
| Immunogen | Recombinant Human Nucleoside diphosphate kinase 6 protein (1-186AA) |
| Raised In | Rabbit |
| Species Reactivity | Human |
| Tested Applications | ELISA, WB, IHC; Recommended dilution: WB:1:500-1:5000, IHC:1:20-1:200 |
| Form | Liquid |
| Conjugate | Non-conjugated |
| Storage Buffer | Preservative: 0.03% Proclin 300 Constituents: 50% Glycerol, 0.01M PBS, PH 7.4 |
| Purification Method | >95%, Protein G purified |
| Isotype | IgG |
| Clonality | Polyclonal |
| Alias | Nucleoside diphosphate kinase 6 (NDK 6) (NDP kinase 6) (EC 2.7.4.6) (Inhibitor of p53-induced apoptosis-alpha) (IPIA-alpha) (nm23-H6), NME6 |
| Immunogen Species | Homo sapiens (Human) |
| Research Area | Cell Biology |
| Target Names | NME6 |

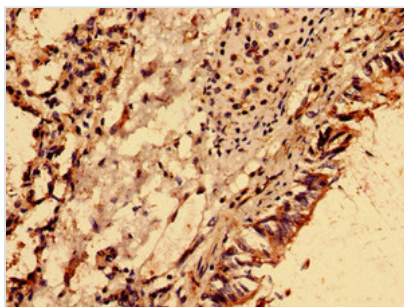
Image



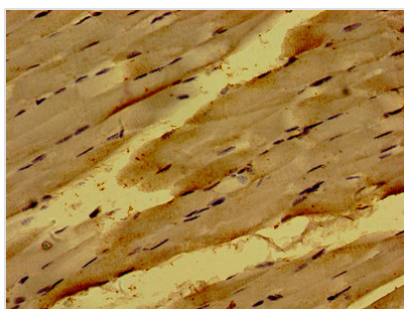
Western blot
 All lanes: NME6 antibody at 2µg/ml + HeLa whole cell lysate
 Secondary
 Goat polyclonal to rabbit IgG at 1/10000 dilution
 Predicted band size: 22, 14, 19 kDa
 Observed band size: 22 kDa



Immunohistochemistry of paraffin-embedded human kidney tissue using CSB-PA015891LA01HU at dilution of 1:100



Immunohistochemistry analysis of human lung cancer using CSB-PA015891LA01HU at dilution of 1:100



Immunohistochemistry of paraffin-embedded human skeletal muscle tissue using CSB-PA015891LA01HU at dilution of 1:100

Usage

For Research Use Only. Not for use in diagnostic or therapeutic procedures.