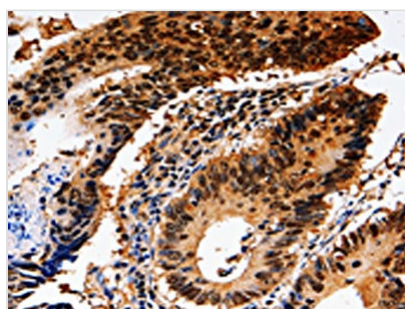




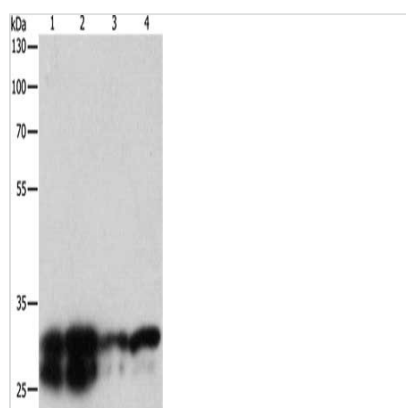
YWHAE Antibody

Product Code	CSB-PA363619
Storage	Upon receipt, store at -20°C or -80°C. Avoid repeated freeze.
Uniprot No.	P62258
Immunogen	Fusion protein of Human YWHAE
Raised In	Rabbit
Species Reactivity	Human,Mouse,Rat
Tested Applications	ELISA,WB,IHC;ELISA:1:500-1:10000,WB:1:500-1:2000,IHC:1:5-1:20
Form	Liquid
Conjugate	Non-conjugated
Storage Buffer	-20°C, pH7.4 PBS, 0.05% NaN ₃ , 40% Glycerol
Purification Method	Antigen affinity purification
Isotype	IgG
Alias	Tyrosine 3-monooxygenase/tryptophan 5-monooxygenase activation protein, epsilon polypeptide
Immunogen Species	Homo sapiens (Human)
Target Names	YWHAE

Image



The image on the left is immunohistochemistry of paraffin-embedded Human colon cancer tissue using CSB-PA363619(YWHAE Antibody) at dilution 1/10, on the right is treated with fusion protein. (Original magnification: x200)



Gel: 10%SDS-PAGE, Lysate: 30 µg, Lane 1-4: HT29 cells, 293T cells, Hela cells, Mouse brain tissue, Primary antibody: CSB-PA363619(YWHAE Antibody) at dilution 1/250, Secondary antibody: Goat anti rabbit IgG at 1/8000 dilution, Exposure time: 1 second

Usage

For Research Use Only. Not for use in diagnostic or therapeutic procedures.