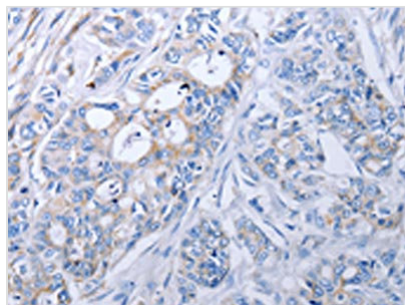




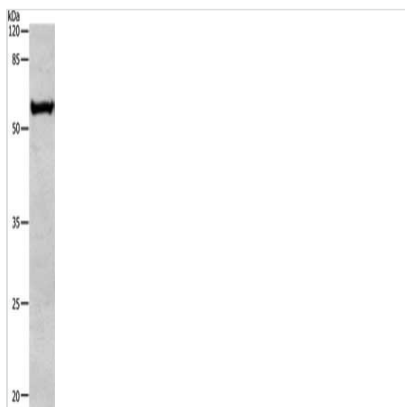
ALDH1A1/ALDH1A2/ALDH1A3 Antibody

Product Code	CSB-PA729886
Storage	Upon receipt, store at -20°C or -80°C. Avoid repeated freeze.
Uniprot No.	P00352/O94788/P47895
Immunogen	Fusion protein of Human ALDH1A1/ALDH1A2/ALDH1A3
Raised In	Rabbit
Species Reactivity	Human
Tested Applications	ELISA,WB,IHC;ELISA:1:1000-1:5000,WB:1:500-1:1000,IHC:1:20-1:50
Form	Liquid
Conjugate	Non-conjugated
Storage Buffer	-20°C, pH7.4 PBS, 0.05% NaN ₃ , 40% Glycerol
Purification Method	Antigen affinity purification
Isotype	IgG
Alias	Aldehyde dehydrogenase 1 family, member A1/2/3
Immunogen Species	Homo sapiens (Human)
Target Names	ALDH1A1/ALDH1A2/ALDH1A3

Image



The image on the left is immunohistochemistry of paraffin-embedded Human colon cancer tissue using CSB-PA729886(ALDH1A1/ALDH1A2/ALDH1A3 Antibody) at dilution 1/40, on the right is treated with fusion protein. (Original magnification: x200)



Gel: 10%SDS-PAGE, Lysate: 30 µg, Lane: Human liver cancer tissue, Primary antibody: CSB-PA729886(ALDH1A1/ALDH1A2/ALDH1A3 Antibody) at dilution 1/450, Secondary antibody: Goat anti rabbit IgG at 1/8000 dilution, Exposure time: 1 minute

Usage

For Research Use Only. Not for use in diagnostic or therapeutic procedures.