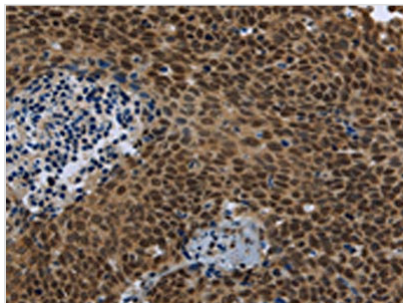




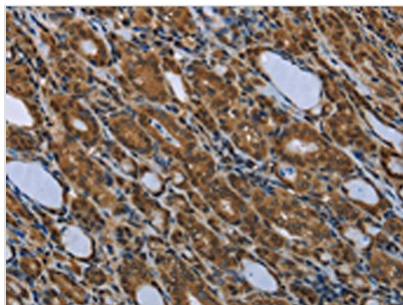
# SMAD4 Antibody

<b>Product Code</b>	CSB-PA948107
<b>Storage</b>	Upon receipt, store at -20°C or -80°C. Avoid repeated freeze.
<b>Uniprot No.</b>	Q13485
<b>Immunogen</b>	Fusion protein of Human SMAD4
<b>Raised In</b>	Rabbit
<b>Species Reactivity</b>	Human,Mouse,Rat
<b>Tested Applications</b>	ELISA,WB,IHC;ELISA:1:1000-1:2000,WB:1:200-1:500,IHC:1:50-1:200
<b>Form</b>	Liquid
<b>Conjugate</b>	Non-conjugated
<b>Storage Buffer</b>	-20°C, pH7.4 PBS, 0.05% NaN <sub>3</sub> , 40% Glycerol
<b>Purification Method</b>	Antigen affinity purification
<b>Isotype</b>	IgG
<b>Alias</b>	SMAD family member 4
<b>Immunogen Species</b>	Homo sapiens (Human)
<b>Target Names</b>	SMAD4

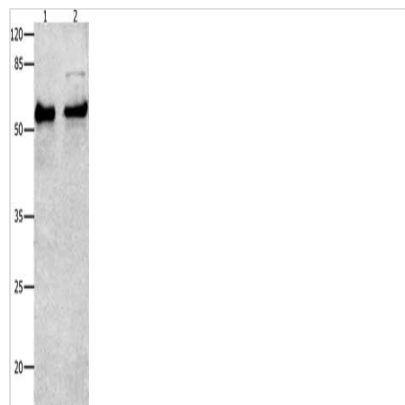
## Image



The image is immunohistochemistry of paraffin-embedded Human cervical cancer tissue using CSB-PA948107(SMAD4 Antibody) at dilution 1/40. (Original magnification: x200)



The image is immunohistochemistry of paraffin-embedded Human thyroid cancer tissue using CSB-PA948107(SMAD4 Antibody) at dilution 1/40. (Original magnification: x200)



Gel: 10%SDS-PAGE, Lysate: 30  $\mu$ g, Lane 1-2: Human liver cancer tissue, Hela cells, Primary antibody: CSB-PA948107(SMAD4 Antibody) at dilution 1/150, Secondary antibody: Goat anti rabbit IgG at 1/8000 dilution, Exposure time: 2 minutes

## Usage

For Research Use Only. Not for use in diagnostic or therapeutic procedures.