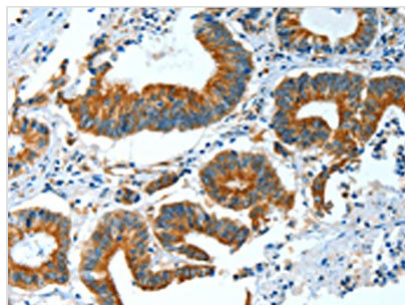




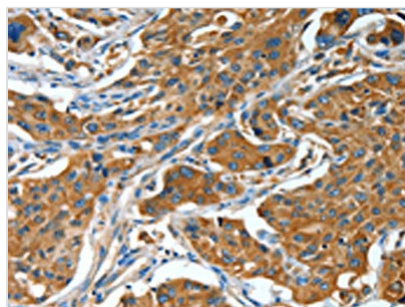
# BAG3 Antibody

<b>Product Code</b>	CSB-PA245428
<b>Storage</b>	Upon receipt, store at -20°C or -80°C. Avoid repeated freeze.
<b>Uniprot No.</b>	O95817
<b>Immunogen</b>	Fusion protein of Human BAG3
<b>Raised In</b>	Rabbit
<b>Species Reactivity</b>	Human, Mouse
<b>Tested Applications</b>	ELISA, WB, IHC; ELISA: 1:2000-1:5000, WB: 1:500-1:2000, IHC: 1:25-1:100
<b>Form</b>	Liquid
<b>Conjugate</b>	Non-conjugated
<b>Storage Buffer</b>	-20°C, pH7.4 PBS, 0.05% NaN <sub>3</sub> , 40% Glycerol
<b>Purification Method</b>	Antigen affinity purification
<b>Isotype</b>	IgG
<b>Alias</b>	BCL2-associated athanogene 3
<b>Immunogen Species</b>	Homo sapiens (Human)
<b>Target Names</b>	BAG3

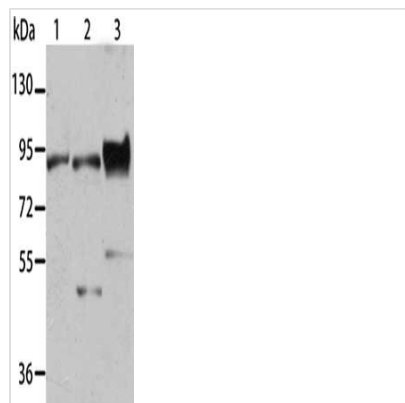
## Image



The image on the left is immunohistochemistry of paraffin-embedded Human colon cancer tissue using CSB-PA245428(BAG3 Antibody) at dilution 1/25, on the right is treated with fusion protein. (Original magnification: ×200)



The image on the left is immunohistochemistry of paraffin-embedded Human lung cancer tissue using CSB-PA245428(BAG3 Antibody) at dilution 1/25, on the right is treated with fusion protein. (Original magnification: ×200)



Gel: 8%SDS-PAGE, Lysate: 40  $\mu$ g, Lane 1-3:  
Mouse muscle tissue, K562 cells, mouse heart  
tissue, Primary antibody: CSB-PA245428(BAG3  
Antibody) at dilution 1/450, Secondary antibody:  
Goat anti rabbit IgG at 1/8000 dilution, Exposure  
time: 10 seconds

**Usage**

For Research Use Only. Not for use in diagnostic or therapeutic procedures.