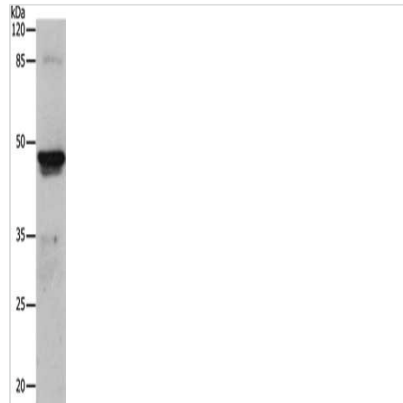




KRT15 Antibody

Product Code	CSB-PA591463
Storage	Upon receipt, store at -20°C or -80°C. Avoid repeated freeze.
Uniprot No.	P19012
Immunogen	Fusion protein of Human KRT15
Raised In	Rabbit
Species Reactivity	Human,Mouse,Rat
Tested Applications	ELISA,WB;ELISA:1:1000-1:5000,WB:1:500-1:2000
Form	Liquid
Conjugate	Non-conjugated
Storage Buffer	-20°C, pH7.4 PBS, 0.05% NaN ₃ , 40% Glycerol
Purification Method	Antigen affinity purification
Isotype	IgG
Alias	Keratin, type I cytoskeletal 15
Immunogen Species	Homo sapiens (Human)
Target Names	KRT15

Image



Gel: 10%SDS-PAGE, Lysate: 24 µg, Lane: Human ovarian cancer tissue, Primary antibody: CSB-PA591463(KRT15 Antibody) at dilution 1/300, Secondary antibody: Goat anti rabbit IgG at 1/8000 dilution, Exposure time: 1 minute

Usage

For Research Use Only. Not for use in diagnostic or therapeutic procedures.