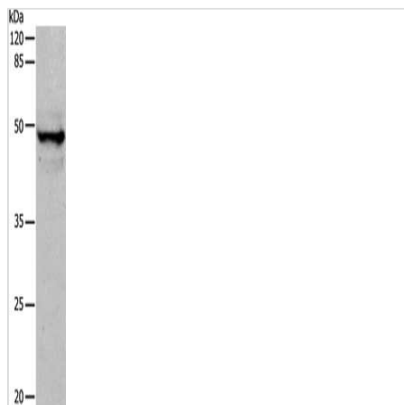




# KRT15 Antibody

<b>Product Code</b>	CSB-PA055420
<b>Storage</b>	Upon receipt, store at -20°C or -80°C. Avoid repeated freeze.
<b>Uniprot No.</b>	P19012
<b>Immunogen</b>	Fusion protein of Human KRT15
<b>Raised In</b>	Rabbit
<b>Species Reactivity</b>	Human,Mouse,Rat
<b>Tested Applications</b>	ELISA,WB;ELISA:1:1000-1:5000,WB:1:500-1:2000
<b>Form</b>	Liquid
<b>Conjugate</b>	Non-conjugated
<b>Storage Buffer</b>	-20°C, pH7.4 PBS, 0.05% NaN <sub>3</sub> , 40% Glycerol
<b>Purification Method</b>	Antigen affinity purification
<b>Isotype</b>	IgG
<b>Alias</b>	Keratin, type I cytoskeletal 15
<b>Immunogen Species</b>	Homo sapiens (Human)
<b>Target Names</b>	KRT15

## Image



Gel: 10%SDS-PAGE, Lysate: 30 µg, Lane: Mouse thymus tissue, Primary antibody: CSB-PA055420(KRT15 Antibody) at dilution 1/400, Secondary antibody: Goat anti rabbit IgG at 1/8000 dilution, Exposure time: 1.5 minutes

## Usage

For Research Use Only. Not for use in diagnostic or therapeutic procedures.