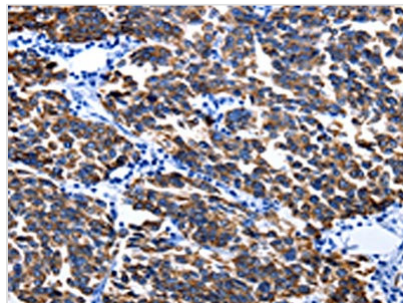




KRT6A Antibody

Product Code	CSB-PA224586
Storage	Upon receipt, store at -20°C or -80°C. Avoid repeated freeze.
Uniprot No.	P02538
Immunogen	Fusion protein of Human KRT6A
Raised In	Rabbit
Species Reactivity	Human,Mouse,Rat
Tested Applications	ELISA,IHC;ELISA:1:1000-1:5000,IHC:1:25-1:100
Form	Liquid
Conjugate	Non-conjugated
Storage Buffer	-20°C, pH7.4 PBS, 0.05% NaN ₃ , 40% Glycerol
Purification Method	Antigen affinity purification
Isotype	IgG
Alias	Keratin, type II cytoskeletal 6A
Immunogen Species	Homo sapiens (Human)
Target Names	KRT6A

Image



The image on the left is immunohistochemistry of paraffin-embedded Human breast cancer tissue using CSB-PA224586(KRT6A Antibody) at dilution 1/25, on the right is treated with fusion protein. (Original magnification: x200)