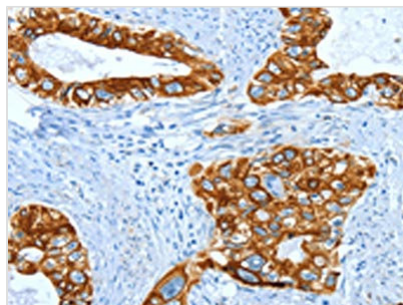




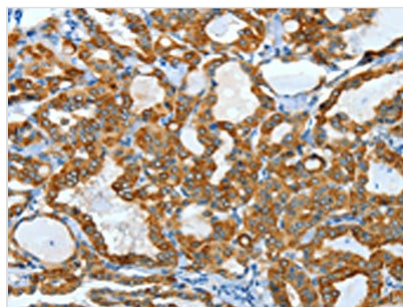
KRT40 Antibody

| | |
|----------------------------|---|
| Product Code | CSB-PA268168 |
| Storage | Upon receipt, store at -20°C or -80°C. Avoid repeated freeze. |
| Uniprot No. | Q6A162 |
| Immunogen | Fusion protein of Human KRT40 |
| Raised In | Rabbit |
| Species Reactivity | Human,Mouse,Rat |
| Tested Applications | ELISA,WB,IHC;ELISA:1:2000-1:5000,WB:1:500-1:2000,IHC:1:50-1:200 |
| Form | Liquid |
| Conjugate | Non-conjugated |
| Storage Buffer | -20°C, pH7.4 PBS, 0.05% NaN ₃ , 40% Glycerol |
| Purification Method | Antigen affinity purification |
| Isotype | IgG |
| Alias | keratin 40 |
| Immunogen Species | Homo sapiens (Human) |
| Target Names | KRT40 |

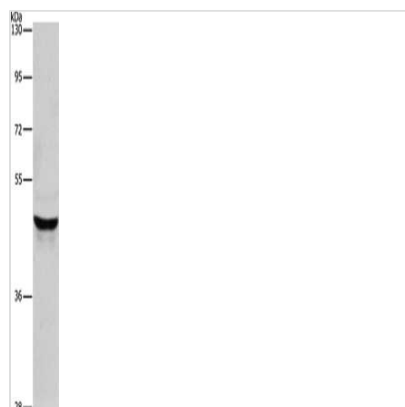
Image



The image on the left is immunohistochemistry of paraffin-embedded Human cervical cancer tissue using CSB-PA268168(KRT40 Antibody) at dilution 1/50, on the right is treated with fusion protein. (Original magnification: X200)



The image on the left is immunohistochemistry of paraffin-embedded Human thyroid cancer tissue using CSB-PA268168(KRT40 Antibody) at dilution 1/50, on the right is treated with fusion protein. (Original magnification: X200)



Gel: 8%SDS-PAGE, Lysate: 40 μ g, Lane: Lovo cells, Primary antibody: CSB-PA268168(KRT40 Antibody) at dilution 1/950, Secondary antibody: Goat anti rabbit IgG at 1/8000 dilution, Exposure time: 10 seconds