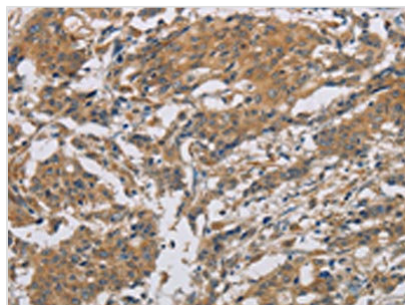




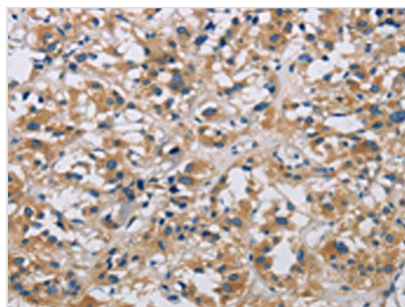
ARF6 Antibody

| | |
|----------------------------|---|
| Product Code | CSB-PA029843 |
| Storage | Upon receipt, store at -20°C or -80°C. Avoid repeated freeze. |
| Uniprot No. | P62330 |
| Immunogen | Fusion protein of Human ARF6 |
| Raised In | Rabbit |
| Species Reactivity | Human,Mouse,Rat |
| Tested Applications | ELISA,WB,IHC;ELISA:1:1000-1:2000,WB:1:200-1:1000,IHC:1:25-1:100 |
| Form | Liquid |
| Conjugate | Non-conjugated |
| Storage Buffer | -20°C, pH7.4 PBS, 0.05% NaN ₃ , 40% Glycerol |
| Purification Method | Antigen affinity purification |
| Isotype | IgG |
| Alias | ADP-ribosylation factor 6 |
| Immunogen Species | Homo sapiens (Human) |
| Target Names | ARF6 |

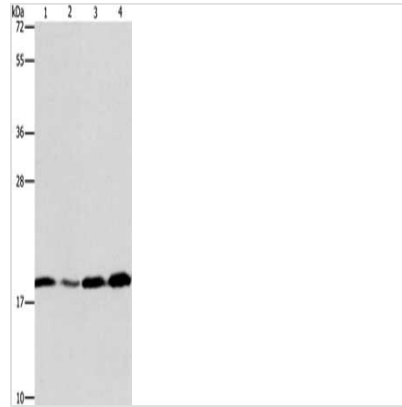
Image



The image is immunohistochemistry of paraffin-embedded Human gastric cancer tissue using CSB-PA029843(ARF6 Antibody) at dilution 1/20. (Original magnification: x200)



The image is immunohistochemistry of paraffin-embedded Human thyroid cancer tissue using CSB-PA029843(ARF6 Antibody) at dilution 1/20. (Original magnification: x200)



Gel: 10%SDS-PAGE, Lysate: 40 μ g, Lane 1-4:
A431 cells, human liver cancer tissue, 231 cells,
human fetal liver tissue, Primary antibody: CSB-
PA029843(ARF6 Antibody) at dilution 1/200,
Secondary antibody: Goat anti rabbit IgG at
1/8000 dilution, Exposure time: 20 seconds

Usage

For Research Use Only. Not for use in diagnostic or therapeutic procedures.