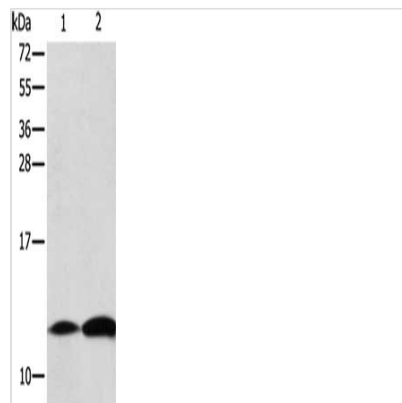




B2M Antibody

Product Code	CSB-PA193585
Storage	Upon receipt, store at -20°C or -80°C. Avoid repeated freeze.
Uniprot No.	P61769
Immunogen	Fusion protein of Human B2M
Raised In	Rabbit
Species Reactivity	Human
Tested Applications	ELISA,WB;ELISA:1:1000-1:2000,WB:1:200-1:1000
Form	Liquid
Conjugate	Non-conjugated
Storage Buffer	-20°C, pH7.4 PBS, 0.05% NaN ₃ , 40% Glycerol
Purification Method	Antigen affinity purification
Isotype	IgG
Alias	Beta-2-microglobulin
Immunogen Species	Homo sapiens (Human)
Target Names	B2M

Image



Gel: 15%SDS-PAGE, Lysate: 40 µg, Lane 1-2: Raji cells, human thyroid cancer tissue, Primary antibody: CSB-PA193585(B2M Antibody) at dilution 1/125, Secondary antibody: Goat anti rabbit IgG at 1/8000 dilution, Exposure time: 10 seconds

Usage

For Research Use Only. Not for use in diagnostic or therapeutic procedures.