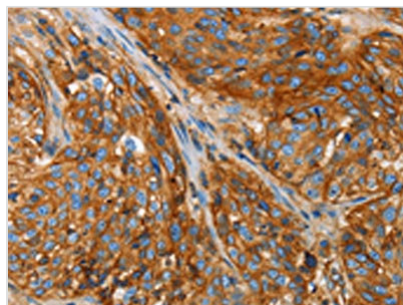




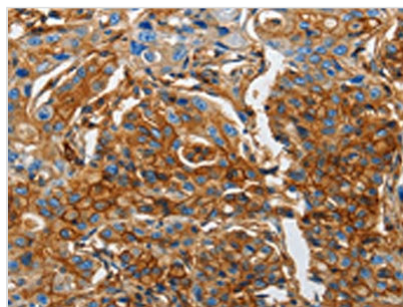
B2M Antibody

Product Code	CSB-PA791042
Storage	Upon receipt, store at -20°C or -80°C. Avoid repeated freeze.
Uniprot No.	P61769
Immunogen	Fusion protein of Human B2M
Raised In	Rabbit
Species Reactivity	Human
Tested Applications	ELISA,WB,IHC;ELISA:1:1000-1:2000,WB:1:200-1:1000,IHC:1:50-1:200
Form	Liquid
Conjugate	Non-conjugated
Storage Buffer	-20°C, pH7.4 PBS, 0.05% NaN ₃ , 40% Glycerol
Purification Method	Antigen affinity purification
Isotype	IgG
Alias	Beta-2-microglobulin
Immunogen Species	Homo sapiens (Human)
Target Names	B2M

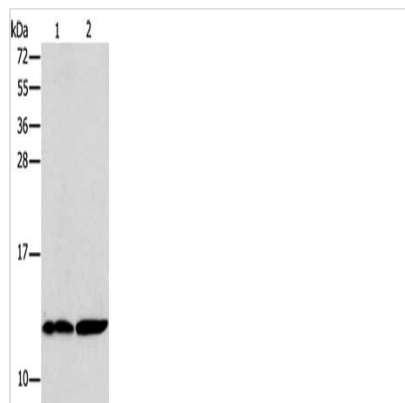
Image



The image on the left is immunohistochemistry of paraffin-embedded Human esophagus cancer tissue using CSB-PA791042(B2M Antibody) at dilution 1/25, on the right is treated with fusion protein. (Original magnification: x200)



The image on the left is immunohistochemistry of paraffin-embedded Human lung cancer tissue using CSB-PA791042(B2M Antibody) at dilution 1/25, on the right is treated with fusion protein. (Original magnification: x200)



Gel: 15%SDS-PAGE, Lysate: 40 μ g, Lane 1-2:
Human kidney tissue, Raji cells, Primary
antibody: CSB-PA791042(B2M Antibody) at
dilution 1/250, Secondary antibody: Goat anti
rabbit IgG at 1/8000 dilution, Exposure time: 20
seconds