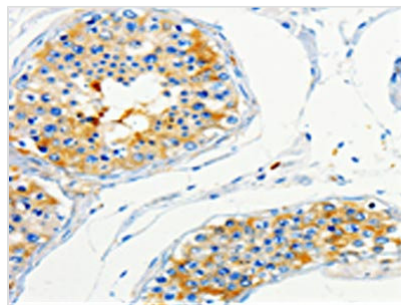




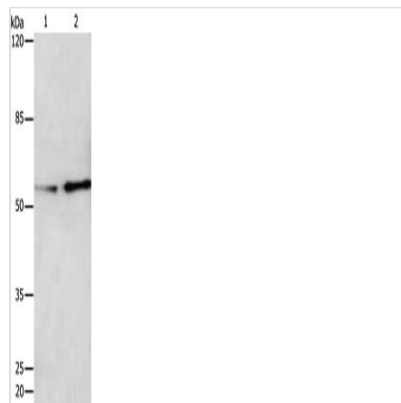
CAP1 Antibody

Product Code	CSB-PA256310
Storage	Upon receipt, store at -20°C or -80°C. Avoid repeated freeze.
Uniprot No.	Q01518
Immunogen	Fusion protein of Human CAP1
Raised In	Rabbit
Species Reactivity	Human,Mouse,Rat
Tested Applications	ELISA,WB,IHC;ELISA:1:1000-1:5000,WB:1:200-1:1000,IHC:1:25-1:100
Form	Liquid
Conjugate	Non-conjugated
Storage Buffer	-20°C, pH7.4 PBS, 0.05% NaN ₃ , 40% Glycerol
Purification Method	Antigen affinity purification
Isotype	IgG
Alias	Adenylyl cyclase-associated protein 1
Immunogen Species	Homo sapiens (Human)
Target Names	CAP1

Image



The image on the left is immunohistochemistry of paraffin-embedded Human skin tissue using CSB-PA256310(CAP1 Antibody) at dilution 1/50, on the right is treated with fusion protein. (Original magnification: x200)



Gel: 10%SDS-PAGE, Lysate: 30 µg, Lane 1-2: HeLa cells, HepG2 cells, Primary antibody: CSB-PA256310(CAP1 Antibody) at dilution 1/250, Secondary antibody: Goat anti rabbit IgG at 1/8000 dilution, Exposure time: 20 minutes

Usage

For Research Use Only. Not for use in diagnostic or therapeutic procedures.