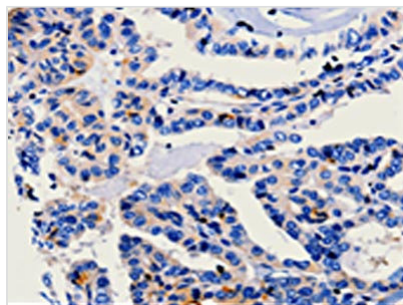




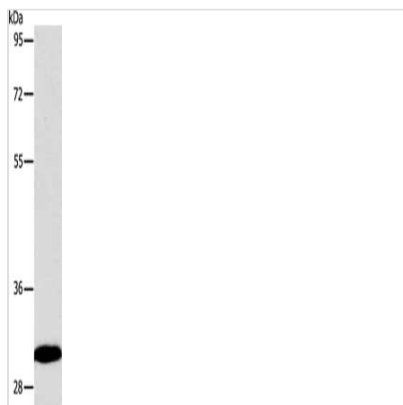
# CA3 Antibody

|                            |  |
|----------------------------|--|
| <b>Product Code</b>        | CSB-PA298167   |
| <b>Storage</b>             | Upon receipt, store at -20°C or -80°C. Avoid repeated freeze.  |
| <b>Uniprot No.</b>         | P07451   |
| <b>Immunogen</b>           | Fusion protein of Human CA3                                    |
| <b>Raised In</b>           | Rabbit   |
| <b>Species Reactivity</b>  | Human,Mouse,Rat  |
| <b>Tested Applications</b> | ELISA,WB,IHC;ELISA:1:1000-1:5000,WB:1:200-1:1000,IHC:1:10-1:50 |
| <b>Form</b>                | Liquid   |
| <b>Conjugate</b>           | Non-conjugated   |
| <b>Storage Buffer</b>      | -20°C, pH7.4 PBS, 0.05% NaN <sub>3</sub> , 40% Glycerol        |
| <b>Purification Method</b> | Antigen affinity purification                                  |
| <b>Isotype</b>             | IgG  |
| <b>Alias</b>               | Carbonic anhydrase 3   |
| <b>Immunogen Species</b>   | Homo sapiens (Human)   |
| <b>Target Names</b>        | CA3  |

## Image



The image on the left is immunohistochemistry of paraffin-embedded Human thyroid cancer tissue using CSB-PA298167(CA3 Antibody) at dilution 1/25, on the right is treated with fusion protein. (Original magnification: x200)



Gel: 10%SDS-PAGE, Lysate: 30 μg, Lane: Human fetal kidney tissue, Primary antibody: CSB-PA298167(CA3 Antibody) at dilution 1/250, Secondary antibody: Goat anti rabbit IgG at 1/8000 dilution, Exposure time: 5 seconds

## Usage

For Research Use Only. Not for use in diagnostic or therapeutic procedures.