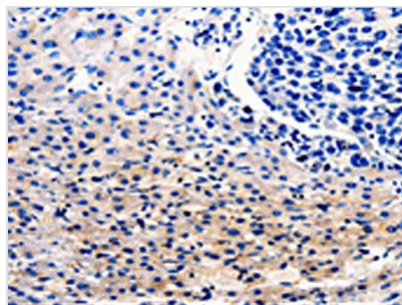




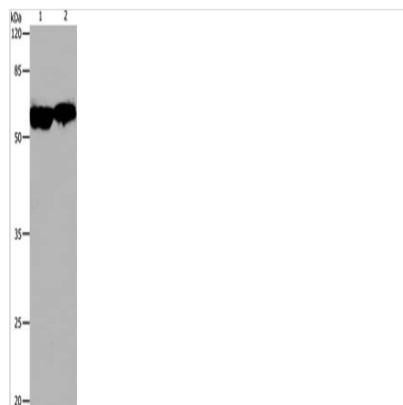
CDC20 Antibody

Product Code	CSB-PA153558
Storage	Upon receipt, store at -20°C or -80°C. Avoid repeated freeze.
Uniprot No.	Q12834
Immunogen	Fusion protein of Human CDC20
Raised In	Rabbit
Species Reactivity	Human,Mouse,Rat
Tested Applications	ELISA,WB,IHC;ELISA:1:1000-1:5000,WB:1:500-1:2000,IHC:1:10-1:50
Form	Liquid
Conjugate	Non-conjugated
Storage Buffer	-20°C, pH7.4 PBS, 0.05% NaN ₃ , 40% Glycerol
Purification Method	Antigen affinity purification
Isotype	IgG
Alias	Cell division cycle protein 20 homolog
Immunogen Species	Homo sapiens (Human)
Target Names	CDC20

Image



The image on the left is immunohistochemistry of paraffin-embedded Human liver cancer tissue using CSB-PA153558(CDC20 Antibody) at dilution 1/25, on the right is treated with fusion protein. (Original magnification: x200)



Gel: 10%SDS-PAGE, Lysate: 30 µg, Lane 1-2: 293T cells, Human cervical cancer tissue, Primary antibody: CSB-PA153558(CDC20 Antibody) at dilution 1/600, Secondary antibody: Goat anti rabbit IgG at 1/8000 dilution, Exposure time: 30 seconds

Usage

For Research Use Only. Not for use in diagnostic or therapeutic procedures.