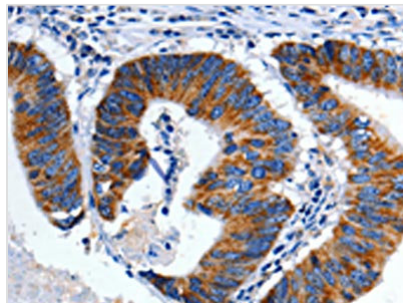




CHRM2 Antibody

Product Code	CSB-PA096500
Storage	Upon receipt, store at -20°C or -80°C. Avoid repeated freeze.
Uniprot No.	P08172
Immunogen	Fusion protein of Human CHRM2
Raised In	Rabbit
Species Reactivity	Human,Mouse,Rat
Tested Applications	ELISA,IHC;ELISA:1:1000-1:2000,IHC:1:10-1:50
Form	Liquid
Conjugate	Non-conjugated
Storage Buffer	-20°C, pH7.4 PBS, 0.05% NaN ₃ , 40% Glycerol
Purification Method	Antigen affinity purification
Isotype	IgG
Alias	cholinergic receptor, muscarinic 2
Immunogen Species	Homo sapiens (Human)
Target Names	CHRM2

Image



The image on the left is immunohistochemistry of paraffin-embedded Human colon cancer tissue using CSB-PA096500(CHRM2 Antibody) at dilution 1/3, on the right is treated with fusion protein. (Original magnification: x200)