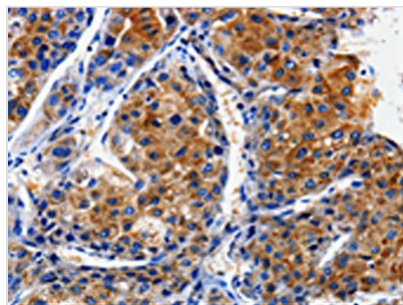




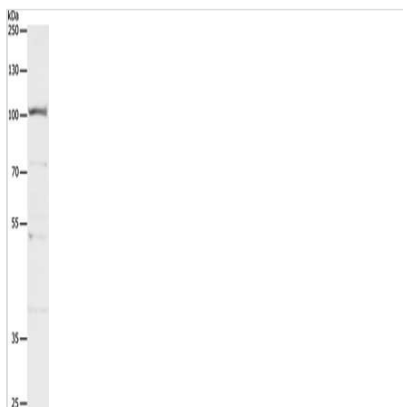
CLCA4 Antibody

Product Code	CSB-PA641512
Storage	Upon receipt, store at -20°C or -80°C. Avoid repeated freeze.
Uniprot No.	Q14CN2
Immunogen	Fusion protein of Human CLCA4
Raised In	Rabbit
Species Reactivity	Human
Tested Applications	ELISA,WB,IHC;ELISA:1:500-1:2000,WB:1:100-1:500,IHC:1:10-1:50
Form	Liquid
Conjugate	Non-conjugated
Storage Buffer	-20°C, pH7.4 PBS, 0.05% NaN ₃ , 40% Glycerol
Purification Method	Antigen affinity purification
Isotype	IgG
Alias	Calcium-activated chloride channel regulator 4
Immunogen Species	Homo sapiens (Human)
Target Names	CLCA4

Image



The image on the left is immunohistochemistry of paraffin-embedded Human liver cancer tissue using CSB-PA641512(CLCA4 Antibody) at dilution 1/10, on the right is treated with fusion protein. (Original magnification: x200)



Gel: 8%SDS-PAGE, Lysate: 40 µg, Lane: 293T cells, Primary antibody: CSB-PA641512(CLCA4 Antibody) at dilution 1/200, Secondary antibody: Goat anti rabbit IgG at 1/8000 dilution, Exposure time: 30 seconds

Usage

For Research Use Only. Not for use in diagnostic or therapeutic procedures.