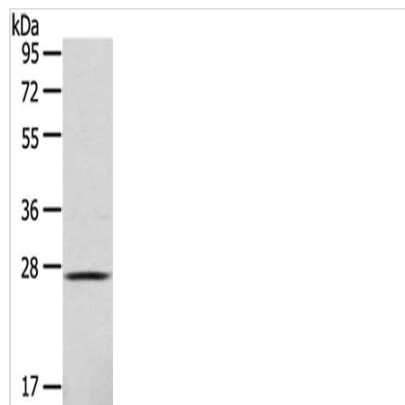




CLEC4D Antibody

Product Code	CSB-PA162407
Storage	Upon receipt, store at -20°C or -80°C. Avoid repeated freeze.
Uniprot No.	Q8WXI8
Immunogen	Fusion protein of Human CLEC4D
Raised In	Rabbit
Species Reactivity	Human
Tested Applications	ELISA,WB;ELISA:1:2000-1:5000,WB:1:500-1:2000
Form	Liquid
Conjugate	Non-conjugated
Storage Buffer	-20°C, pH7.4 PBS, 0.05% NaN ₃ , 40% Glycerol
Purification Method	Antigen affinity purification
Isotype	IgG
Alias	C-type lectin domain family 4, member D
Immunogen Species	Homo sapiens (Human)
Target Names	CLEC4D

Image



Gel: 10%SDS-PAGE,Lysate: 40 μg,,Primary antibody: CSB-PA162407(CLEC4D Antibody) at dilution 1/123 dilution,Secondary antibody: Goat anti rabbit IgG at 1/8000 dilution,Exposure time: 1 minute

Usage

For Research Use Only. Not for use in diagnostic or therapeutic procedures.