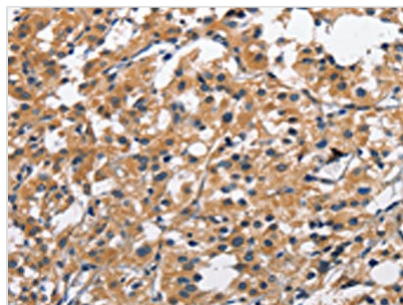




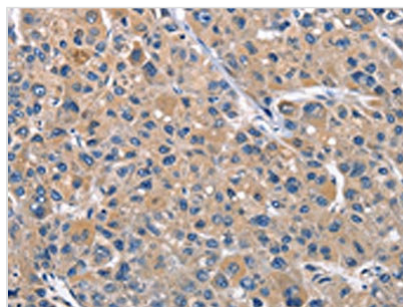
CLEC2D Antibody

Product Code	CSB-PA254797
Storage	Upon receipt, store at -20°C or -80°C. Avoid repeated freeze.
Uniprot No.	Q9UHP7
Immunogen	Fusion protein of Human CLEC2D
Raised In	Rabbit
Species Reactivity	Human
Tested Applications	ELISA,IHC;ELISA:1:2000-1:10000,IHC:1:100-1:300
Form	Liquid
Conjugate	Non-conjugated
Storage Buffer	-20°C, pH7.4 PBS, 0.05% NaN ₃ , 40% Glycerol
Purification Method	Antigen affinity purification
Isotype	IgG
Alias	C-type lectin domain family 2, member D
Immunogen Species	Homo sapiens (Human)
Target Names	CLEC2D

Image



The image on the left is immunohistochemistry of paraffin-embedded Human thyroid cancer tissue using CSB-PA254797(CLEC2D Antibody) at dilution 1/70, on the right is treated with fusion protein. (Original magnification: x200)



The image on the left is immunohistochemistry of paraffin-embedded Human liver cancer tissue using CSB-PA254797(CLEC2D Antibody) at dilution 1/70, on the right is treated with fusion protein. (Original magnification: x200)