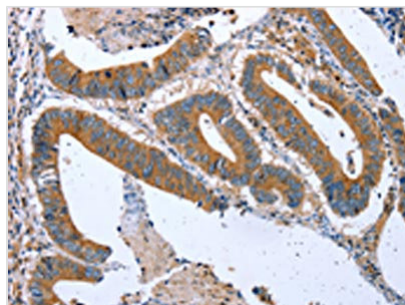




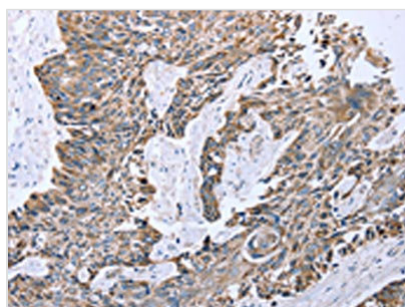
CPT1A Antibody

Product Code	CSB-PA861106
Storage	Upon receipt, store at -20°C or -80°C. Avoid repeated freeze.
Uniprot No.	P50416
Immunogen	Fusion protein of Human CPT1A
Raised In	Rabbit
Species Reactivity	Human,Mouse,Rat
Tested Applications	ELISA,IHC;ELISA:1:1000-1:5000,IHC:1:25-1:100
Form	Liquid
Conjugate	Non-conjugated
Storage Buffer	-20°C, pH7.4 PBS, 0.05% NaN ₃ , 40% Glycerol
Purification Method	Antigen affinity purification
Isotype	IgG
Alias	carnitine palmitoyltransferase 1A (liver)
Immunogen Species	Homo sapiens (Human)
Target Names	CPT1A

Image



The image on the left is immunohistochemistry of paraffin-embedded Human colon cancer tissue using CSB-PA861106(CPT1A Antibody) at dilution 1/20, on the right is treated with fusion protein. (Original magnification: x200)



The image on the left is immunohistochemistry of paraffin-embedded Human esophagus cancer tissue using CSB-PA861106(CPT1A Antibody) at dilution 1/20, on the right is treated with fusion protein. (Original magnification: x200)

Usage

For Research Use Only. Not for use in diagnostic or therapeutic procedures.