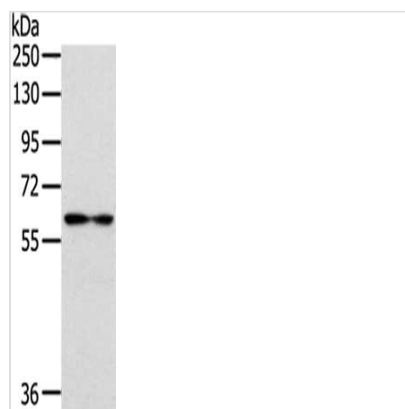




IL18R1 Antibody

| | |
|----------------------------|--|
| Product Code | CSB-PA198730 |
| Storage | Upon receipt, store at -20°C or -80°C. Avoid repeated freeze. |
| Uniprot No. | Q13478 |
| Immunogen | Fusion protein of Human IL18R1 |
| Raised In | Rabbit |
| Species Reactivity | Human,Mouse |
| Tested Applications | ELISA,WB;ELISA:1:1000-1:2000,WB:1:200-1:1000 |
| Form | Liquid |
| Conjugate | Non-conjugated |
| Storage Buffer | -20°C, pH7.4 PBS, 0.05% NaN ₃ , 40% Glycerol |
| Purification Method | Antigen affinity purification |
| Isotype | IgG |
| Alias | CD218 antigen-like family member A antibody; CD218a antibody; CDw218a antibody; CDw218a antigen antibody; IL 1Rrp antibody; IL-18R-1 antibody; IL-18R1 antibody; IL-1Rrp antibody; IL1 receptor related protein antibody; IL1 receptor-related protein antibody; IL18R_HUMAN antibody; IL18R1 antibody; IL18RA antibody; Il18ralpha antibody; IL1R-rp antibody; IL1RRP antibody; Interleukin 18 receptor 1 antibody; Interleukin 18 receptor, alpha chain antibody; Interleukin-18 receptor 1 antibody |
| Immunogen Species | Homo sapiens (Human) |
| Target Names | IL18R1 |

Image



Gel: 8%SDS-PAGE,Lysate: 40 µg,Lane: Human thyroid cancer tissue,Primary antibody: CSB-PA198730(IL18R1 Antibody) at dilution 1/222 dilution,Secondary antibody: Goat anti rabbit IgG at 1/8000 dilution,Exposure time: 2 minutes

Usage For Research Use Only. Not for use in diagnostic or therapeutic procedures.