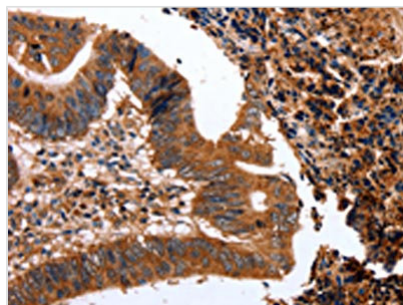




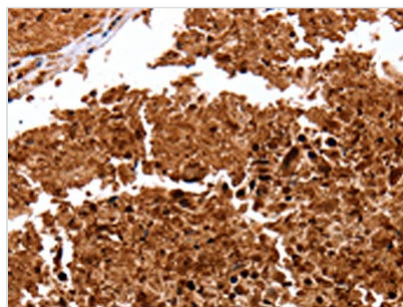
CLEC4A Antibody

Product Code	CSB-PA016840
Storage	Upon receipt, store at -20°C or -80°C. Avoid repeated freeze.
Uniprot No.	Q9UMR7
Immunogen	Fusion protein of Human CLEC4A
Raised In	Rabbit
Species Reactivity	Human, Mouse
Tested Applications	ELISA, WB, IHC; ELISA: 1:1000-1:5000, WB: 1:200-1:1000, IHC: 1:50-1:200
Form	Liquid
Conjugate	Non-conjugated
Storage Buffer	-20°C, pH7.4 PBS, 0.05% NaN ₃ , 40% Glycerol
Purification Method	Antigen affinity purification
Isotype	IgG
Alias	C-type lectin domain family 4, member A
Immunogen Species	Homo sapiens (Human)
Target Names	CLEC4A

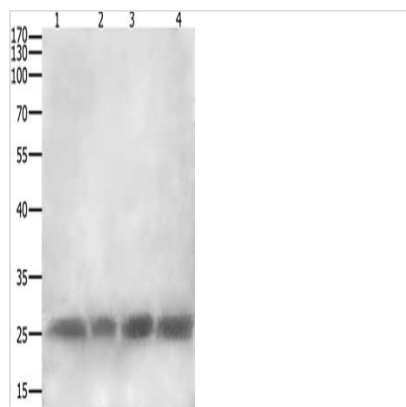
Image



The image on the left is immunohistochemistry of paraffin-embedded Human colon cancer tissue using CSB-PA016840(CLEC4A Antibody) at dilution 1/15, on the right is treated with fusion protein. (Original magnification: ×200)



The image on the left is immunohistochemistry of paraffin-embedded Human lung cancer tissue using CSB-PA016840(CLEC4A Antibody) at dilution 1/15, on the right is treated with fusion protein. (Original magnification: ×200)



Gel: 12+15%SDS-PAGE, Lysate: 40 μ g, Lane 1-4: RAW264.7, Hela cells, 823 cells, A549 cells, Primary antibody: CSB-PA016840(CLEC4A Antibody) at dilution 1/300, Secondary antibody: Goat anti rabbit IgG at 1/8000 dilution, Exposure time: 10 minutes

Usage

For Research Use Only. Not for use in diagnostic or therapeutic procedures.