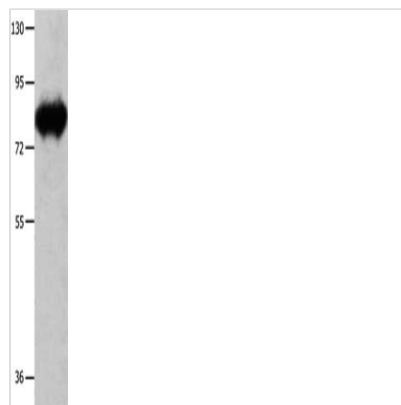




# ECE1 Antibody

<b>Product Code</b>	CSB-PA891748
<b>Storage</b>	Upon receipt, store at -20°C or -80°C. Avoid repeated freeze.
<b>Uniprot No.</b>	P42892
<b>Immunogen</b>	Fusion protein of Human ECE1
<b>Raised In</b>	Rabbit
<b>Species Reactivity</b>	Human,Mouse,Rat
<b>Tested Applications</b>	ELISA,WB;ELISA:1:1000-1:5000,WB:1:1000-1:5000
<b>Relevance</b>	The protein encoded by this gene is involved in proteolytic processing of endothelin precursors to biologically active peptides. Mutations in this gene are associated with Hirschsprung disease, cardiac defects and autonomic dysfunction. Alternatively spliced transcript variants encoding different isoforms have been noted for this gene.
<b>Form</b>	Liquid
<b>Conjugate</b>	Non-conjugated
<b>Storage Buffer</b>	-20°C, pH7.4 PBS, 0.05% NaN3, 40% Glycerol
<b>Purification Method</b>	Antigen affinity purification
<b>Isotype</b>	IgG
<b>Alias</b>	endothelin converting enzyme 1
<b>Species</b>	Homo sapiens (Human)
<b>Target Names</b>	ECE1

## Image



Gel: 8%SDS-PAGE, Lysate: 30 µg, Lane: Mouse heart tissue, Primary antibody: CSB-PA891748(ECE1 Antibody) at dilution 1/900, Secondary antibody: Goat anti rabbit IgG at 1/8000 dilution, Exposure time: 10 seconds