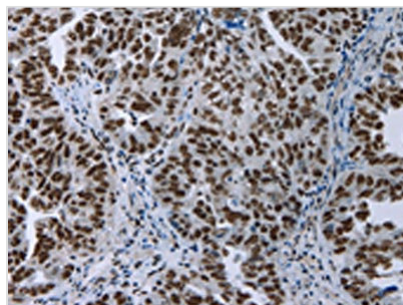




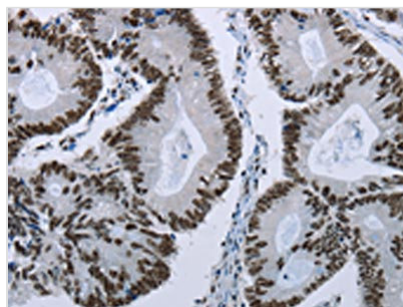
ELN Antibody

Product Code	CSB-PA583825
Storage	Upon receipt, store at -20°C or -80°C. Avoid repeated freeze.
Uniprot No.	P15502
Immunogen	Fusion protein of Human ELN
Raised In	Rabbit
Species Reactivity	Human
Tested Applications	ELISA, WB, IHC; ELISA: 1:1000-1:2000, WB: 1:200-1:1000, IHC: 1:50-1:200
Form	Liquid
Conjugate	Non-conjugated
Storage Buffer	-20°C, pH7.4 PBS, 0.05% NaN ₃ , 40% Glycerol
Purification Method	Antigen affinity purification
Isotype	IgG
Alias	elastin
Immunogen Species	Homo sapiens (Human)
Target Names	ELN

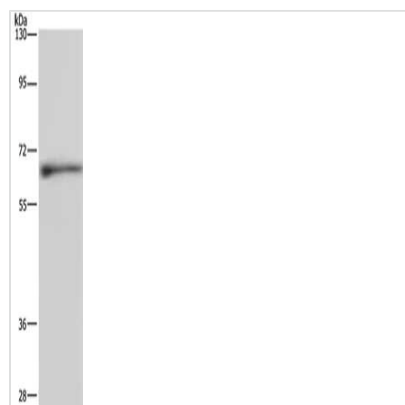
Image



The image on the left is immunohistochemistry of paraffin-embedded Human ovarian cancer tissue using CSB-PA583825(ELN Antibody) at dilution 1/50, on the right is treated with fusion protein. (Original magnification: ×200)



The image on the left is immunohistochemistry of paraffin-embedded Human colon cancer tissue using CSB-PA583825(ELN Antibody) at dilution 1/50, on the right is treated with fusion protein. (Original magnification: ×200)



Gel: 10%SDS-PAGE, Lysate: 40 μ g, Lane:
Human hepatocellular carcinoma tissue, Primary
antibody: CSB-PA583825(ELN Antibody) at
dilution 1/500, Secondary antibody: Goat anti
rabbit IgG at 1/8000 dilution, Exposure time: 5
minutes