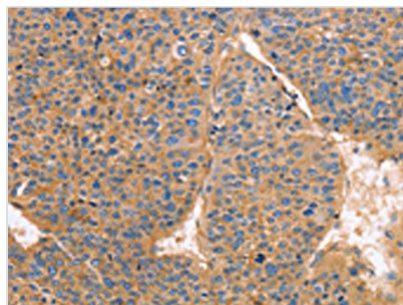




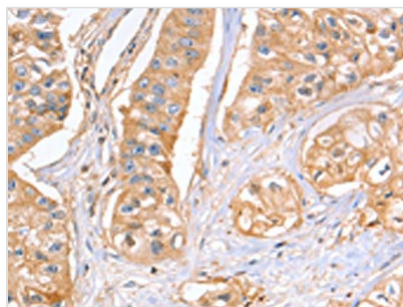
# GNB1 Antibody

|                            |  |
|----------------------------|--|
| <b>Product Code</b>        | CSB-PA725644   |
| <b>Storage</b>             | Upon receipt, store at -20°C or -80°C. Avoid repeated freeze.      |
| <b>Uniprot No.</b>         | P62873   |
| <b>Immunogen</b>           | Fusion protein of Human GNB1                                       |
| <b>Raised In</b>           | Rabbit   |
| <b>Species Reactivity</b>  | Human,Mouse,Rat  |
| <b>Tested Applications</b> | ELISA,WB,IHC;ELISA:1:2000-1:5000,WB:1:500-1:2000,IHC:1:25-1:100    |
| <b>Form</b>                | Liquid   |
| <b>Conjugate</b>           | Non-conjugated   |
| <b>Storage Buffer</b>      | -20°C, pH7.4 PBS, 0.05% NaN <sub>3</sub> , 40% Glycerol            |
| <b>Purification Method</b> | Antigen affinity purification                                      |
| <b>Isotype</b>             | IgG  |
| <b>Alias</b>               | guanine nucleotide binding protein (G protein), beta polypeptide 1 |
| <b>Immunogen Species</b>   | Homo sapiens (Human)   |
| <b>Target Names</b>        | GNB1   |

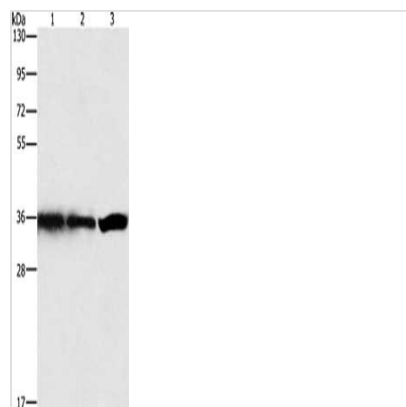
## Image



The image on the left is immunohistochemistry of paraffin-embedded Human liver cancer tissue using CSB-PA725644(GNB1 Antibody) at dilution 1/25, on the right is treated with fusion protein. (Original magnification: x200)



The image on the left is immunohistochemistry of paraffin-embedded Human breast cancer tissue using CSB-PA725644(GNB1 Antibody) at dilution 1/25, on the right is treated with fusion protein. (Original magnification: x200)



Gel: 15%SDS-PAGE, Lysate: 40  $\mu$ g, Lane 1-3:  
Hela cells, 293T cells, 231 cells, Primary  
antibody: CSB-PA725644(GNB1 Antibody) at  
dilution 1/450, Secondary antibody: Goat anti  
rabbit IgG at 1/8000 dilution, Exposure time: 1  
second