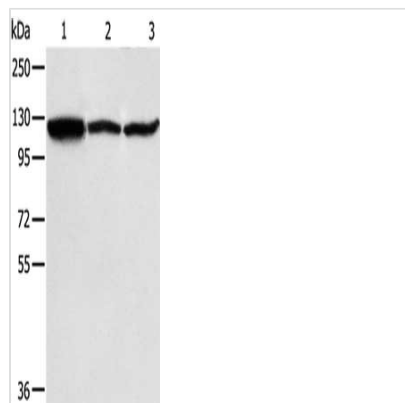




# HSPH1 Antibody

|                            |   |
|----------------------------|---|
| <b>Product Code</b>        | CSB-PA684403  |
| <b>Storage</b>             | Upon receipt, store at -20°C or -80°C. Avoid repeated freeze. |
| <b>Uniprot No.</b>         | Q92598  |
| <b>Immunogen</b>           | Fusion protein of Human HSPH1                                 |
| <b>Raised In</b>           | Rabbit  |
| <b>Species Reactivity</b>  | Human,Mouse,Rat   |
| <b>Tested Applications</b> | ELISA,WB;ELISA:1:1000-1:2000,WB:1:200-1:1000                  |
| <b>Form</b>                | Liquid  |
| <b>Conjugate</b>           | Non-conjugated  |
| <b>Storage Buffer</b>      | -20°C, pH7.4 PBS, 0.05% NaN <sub>3</sub> , 40% Glycerol       |
| <b>Purification Method</b> | Antigen affinity purification                                 |
| <b>Isotype</b>             | IgG   |
| <b>Alias</b>               | Heat shock 105kDa/110kDa protein 1                            |
| <b>Immunogen Species</b>   | Homo sapiens (Human)  |
| <b>Target Names</b>        | HSPH1   |

## Image



Gel: 8%SDS-PAGE, Lysate: 40 µg, Lane 1-3: A375 cells, NIH/3T3 cells, PC3 cells, Primary antibody: CSB-PA684403(HSPH1 Antibody) at dilution 1/200, Secondary antibody: Goat anti rabbit IgG at 1/8000 dilution, Exposure time: 40 seconds

## Usage

For Research Use Only. Not for use in diagnostic or therapeutic procedures.