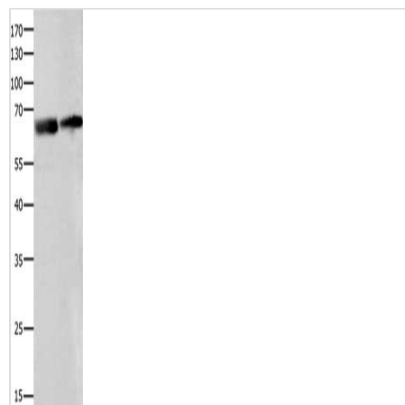




IGF2BP2 Antibody

Product Code	CSB-PA215752
Storage	Upon receipt, store at -20°C or -80°C. Avoid repeated freeze.
Uniprot No.	Q9Y6M1
Immunogen	Fusion protein of Human IGF2BP2
Raised In	Rabbit
Species Reactivity	Human,Mouse
Tested Applications	ELISA,WB;ELISA:1:1000-1:5000,WB:1:200-1:1000
Form	Liquid
Conjugate	Non-conjugated
Storage Buffer	-20°C, pH7.4 PBS, 0.05% NaN ₃ , 40% Glycerol
Purification Method	Antigen affinity purification
Isotype	IgG
Alias	insulin-like growth factor 2 mRNA binding protein 2
Immunogen Species	Homo sapiens (Human)
Target Names	IGF2BP2

Image



Gel: 8%SDS-PAGE, Lysate: 40 µg, Lane 1-2: Human liver tissue, Human ovarian cancer tissue, Primary antibody: CSB-PA215752(IGF2BP2 Antibody) at dilution 1/300, Secondary antibody: Goat anti rabbit IgG at 1/8000 dilution, Exposure time: 2 minutes

Usage

For Research Use Only. Not for use in diagnostic or therapeutic procedures.