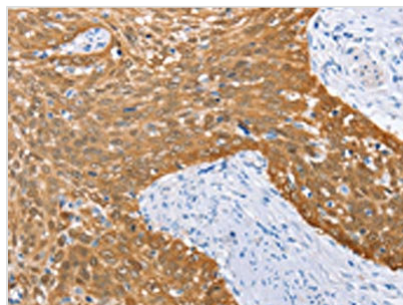




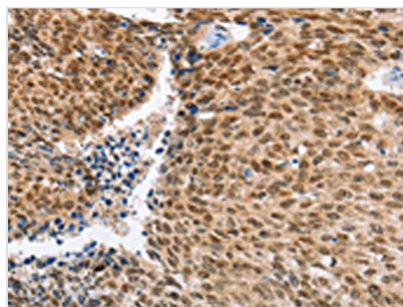
IRF6 Antibody

Product Code	CSB-PA102246
Storage	Upon receipt, store at -20°C or -80°C. Avoid repeated freeze.
Uniprot No.	O14896
Immunogen	Fusion protein of Human IRF6
Raised In	Rabbit
Species Reactivity	Human,Mouse
Tested Applications	ELISA,WB,IHC;ELISA:1:1000-1:2000,WB:1:200-1:1000,IHC:1:50-1:200
Form	Liquid
Conjugate	Non-conjugated
Storage Buffer	-20°C, pH7.4 PBS, 0.05% NaN ₃ , 40% Glycerol
Purification Method	Antigen affinity purification
Isotype	IgG
Alias	interferon regulatory factor 6
Immunogen Species	Homo sapiens (Human)
Target Names	IRF6

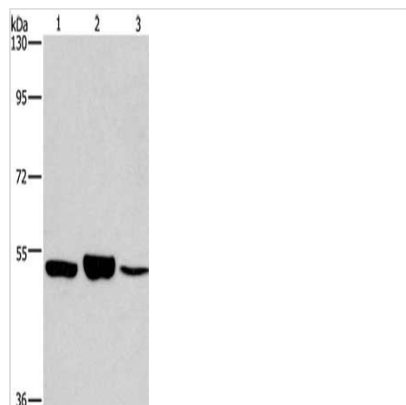
Image



The image on the left is immunohistochemistry of paraffin-embedded Human cervical cancer tissue using CSB-PA102246(IRF6 Antibody) at dilution 1/50, on the right is treated with fusion protein. (Original magnification: x200)



The image on the left is immunohistochemistry of paraffin-embedded Human lung cancer tissue using CSB-PA102246(IRF6 Antibody) at dilution 1/50, on the right is treated with fusion protein. (Original magnification: x200)



Gel: 8%SDS-PAGE, Lysate: 40 μ g, Lane 1-3:
231 cells, mouse kidney tissue, Mouse lung
tissue, Primary antibody: CSB-PA102246(IRF6
Antibody) at dilution 1/400, Secondary antibody:
Goat anti rabbit IgG at 1/8000 dilution, Exposure
time: 5 minutes