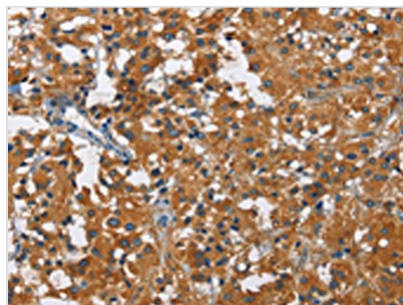




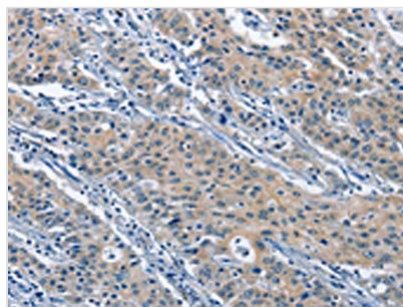
KLF7 Antibody

Product Code	CSB-PA126129
Storage	Upon receipt, store at -20°C or -80°C. Avoid repeated freeze.
Uniprot No.	O75840
Immunogen	Fusion protein of Human KLF7
Raised In	Rabbit
Species Reactivity	Human,Mouse
Tested Applications	ELISA,WB,IHC;ELISA:1:2000-1:5000,WB:1:500-1:2000,IHC:1:50-1:200
Form	Liquid
Conjugate	Non-conjugated
Storage Buffer	-20°C, pH7.4 PBS, 0.05% NaN ₃ , 40% Glycerol
Purification Method	Antigen affinity purification
Isotype	IgG
Alias	Kruppel-like factor 7 (ubiquitous)
Immunogen Species	Homo sapiens (Human)
Target Names	KLF7

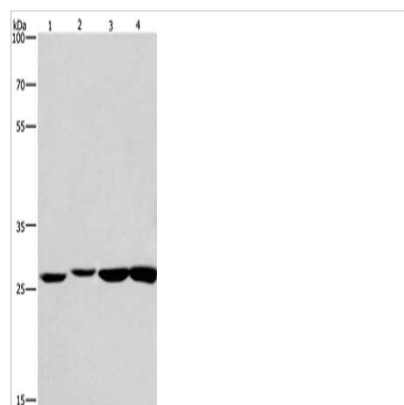
Image



The image on the left is immunohistochemistry of paraffin-embedded Human thyroid cancer tissue using CSB-PA126129(KLF7 Antibody) at dilution 1/60, on the right is treated with fusion protein. (Original magnification: x200)



The image on the left is immunohistochemistry of paraffin-embedded Human gastric cancer tissue using CSB-PA126129(KLF7 Antibody) at dilution 1/60, on the right is treated with fusion protein. (Original magnification: x200)



Gel: 8%SDS-PAGE, Lysate: 40 μ g, Lane 1-4:
 Humna colon cancer tissue, mouse kidney
 tissue, mouse testis tissue, human fetal brain
 tissue, Primary antibody: CSB-PA126129(KLF7
 Antibody) at dilution 1/483.3, Secondary
 antibody: Goat anti rabbit IgG at 1/8000 dilution,
 Exposure time: 20 seconds