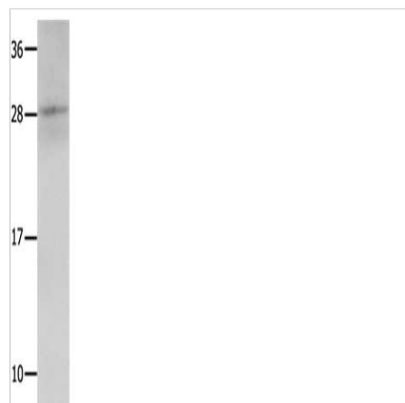




KLK15 Antibody

Product Code	CSB-PA124101
Storage	Upon receipt, store at -20°C or -80°C. Avoid repeated freeze.
Uniprot No.	Q9H2R5
Immunogen	Fusion protein of Human KLK15
Raised In	Rabbit
Species Reactivity	Human,Mouse
Tested Applications	ELISA,WB;ELISA:1:1000-1:5000,WB:1:200-1:1000
Form	Liquid
Conjugate	Non-conjugated
Storage Buffer	-20°C, pH7.4 PBS, 0.05% NaN ₃ , 40% Glycerol
Purification Method	Antigen affinity purification
Isotype	IgG
Alias	kallikrein-related peptidase 15
Immunogen Species	Homo sapiens (Human)
Target Names	KLK15

Image



Gel: 12%SDS-PAGE, Lysate: 30 µg, Lane: Mouse kidney tissue, Primary antibody: CSB-PA124101(KLK15 Antibody) at dilution 1/300, Secondary antibody: Goat anti rabbit IgG at 1/8000 dilution, Exposure time: 10 seconds