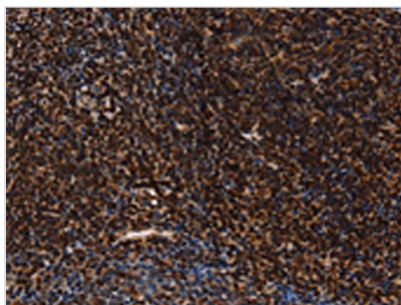




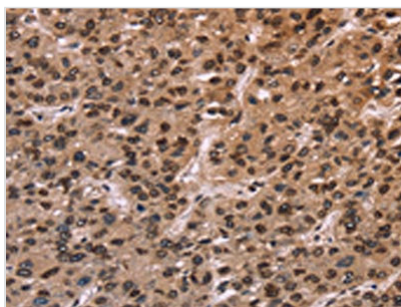
LMNB1 Antibody

| | |
|----------------------------|--|
| Product Code | CSB-PA793156 |
| Storage | Upon receipt, store at -20°C or -80°C. Avoid repeated freeze. |
| Uniprot No. | P20700 |
| Immunogen | Fusion protein of Human LMNB1 |
| Raised In | Rabbit |
| Species Reactivity | Human,Mouse,Rat |
| Tested Applications | ELISA,WB,IHC;ELISA:1:2000-1:10000,WB:1:1000-1:5000,IHC:1:100-1:300 |
| Form | Liquid |
| Conjugate | Non-conjugated |
| Storage Buffer | -20°C, pH7.4 PBS, 0.05% NaN ₃ , 40% Glycerol |
| Purification Method | Antigen affinity purification |
| Isotype | IgG |
| Alias | lamin B1 |
| Immunogen Species | Homo sapiens (Human) |
| Target Names | LMNB1 |

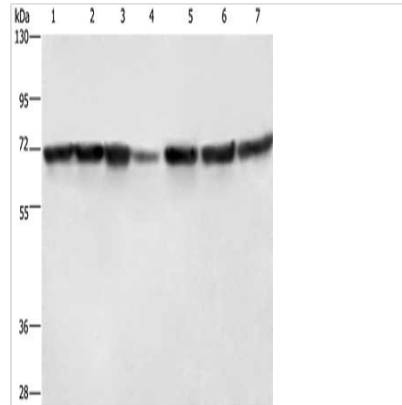
Image



The image on the left is immunohistochemistry of paraffin-embedded Human tonsil tissue using CSB-PA793156(LMNB1 Antibody) at dilution 1/60, on the right is treated with fusion protein. (Original magnification: x200)



The image on the left is immunohistochemistry of paraffin-embedded Human liver cancer tissue using CSB-PA793156(LMNB1 Antibody) at dilution 1/60, on the right is treated with fusion protein. (Original magnification: x200)



Gel: 6%SDS-PAGE, Lysate: 40 μ g, Lane 1-7:
Hela cells, HT29 cells, human fetal liver tissue,
Human testis tissue, 231 cells, K562 cells,
human bladder transitional cell carcinoma tissue,
Primary antibody: CSB-PA793156(LMNB1
Antibody) at dilution 1/750, Secondary antibody:
Goat anti rabbit IgG at 1/8000 dilution, Exposure
time: 1 second

Usage

For Research Use Only. Not for use in diagnostic or therapeutic procedures.